



OPUNAKE & COASTAL NEWS

Vol. 26 No 13, July 21, 2017
www.opunakecoastalnews.co.nz

Published every
Thursday Fortnight

Phone and Fax 761-7016
A/H 761-8206
for Advertising and Editorial
ISSN 2324-2337, ISSN 2324-2345

Inside



ACT candidate for New Plymouth selected. Page 3



Forty years in real estate. Page 5



Manaia Walkway charms. Page 11.



Top coach shares the secrets of success. Page 13.

A letter from the front in World War II. Page

Two out of three ain't bad

Coastal supporters were upbeat when they arrived at Yarrow Stadium for the Club championships on Saturday. After all, the Premiers and Division 1 and Division 2 teams had all made their respective finals. Six finals were being played that day, from Under-13s right up to the Premiers.

"It will be three out of three definitely," John Van der Poel said.

First up was the Division 2 final where Coastal went in as defending champions against Patea. Coastal had taken the title the previous year without losing a game, but this year they had lost to Bell Block and Patea in the qualifying rounds.

Coastal Division 2 coach Dean Wadsworth said an under strength Coastal team was carrying a lot of injuries when they travelled to Patea earlier in the season and lost by around 25 points.



Young fans Kera Dudley (left) and Connor Dudley show their true colours at the Division 2 final between Coastal and Patea.

Continued page 23

Taranaki DHB reaches 100 per cent occupancy

Taranaki DHB is currently experiencing unprecedented patient volumes and this has been occurring for several weeks.

Rosemary Clements, Taranaki DHB chief executive said, "We are at 100 per cent hospital occupancy today.

Our biggest pressure on beds has been medical patients with a total of 85 patients in hospital on Sunday. Taranaki DHB's Paediatric department also remains busy, along with the Intensive Care Unit which has been full with medical patients."

Taranaki Base hospital is resourced to provide care for 239 beds, but has a total capacity of 271 beds. Hawera hospital has 20 beds in total. "As a consequence, staffing and resources required to manage this increased demand is an ongoing challenge. To mitigate this, our nurse managers, Allied Health leaders and other management staff are increasing the frequency of hospital operational meetings to predict care and staffing requirements," Mrs Clements explained.

Elective surgery lists are being reviewed and staffing has increased across inpatient wards to create greater resourced bed capacity. Discharge planning will continue as appropriate.

"We're not in a situation of having to turn urgent medical cases away, but we want the Taranaki community to consider their options when it comes to urgent and non-urgent health issues. With winter and school holidays comes many illnesses and minor injuries, but our hospitals' Emergency Departments (EDs) are for serious and life-threatening illness or injury. There are other options for non-urgent health concerns, starting with your GP," explains Mrs Clements.

Taranaki DHB's recently launched 'Should you be at ED?' education campaign advises people with non-urgent health issues to visit their GP, pharmacy or MediCross and Phoenix Urgent Doctors, who both offer x-ray services and can treat broken bones and other sports-related injuries. Charges apply.

People can avoid ED this

winter by doing what they can to stay well – get a flu vaccination, renew prescriptions, eat healthy, wash their hands and play safe to prevent sports injuries.

Mrs Clements adds, "I would also like to take this opportunity to thank all staff at both of our hospitals who have worked extra shifts to ensure safe and responsive care is provided to patients."



Penniall Jordan

PLUMBING • HEATING • GASFITTING

The heat is on!

Servicing Taranaki Since 1973

191 Broadway – Stratford Ph 0800 765 533

www.pennialljordan.co.nz

5918381AA

NAVEL ORANGES

\$1.99 kg

While stocks last

Congratulations to Maree Dakin winner of our Powerade Rugby Jersey and Game Day pack.



4 SQUARE 45

77 TASMAN ST
OPUNAKE
06 761 8668

Open 7am to 9pm EVERYDAY!



Letters to the Editor

Let's support Kaponga

Kia Ora. Re Tom Stephens letter (Opunake Coastal News June 9). It's good to know there are others out there who care for our small town of Kaponga. As a current resident of 45 years, I was one of those who wanted our library retained and repaired.

I wouldn't call the old library, which was the former Westpac Bank a historic building, but I would agree that the very old library by the hall is one.

It's good to know our younger generation have carried on with the Progressive Group which was formed many years ago, of which I was a member.

I wish them well.
*Pam Wharepapa
Kaponga*

The above is an amended version of a letter we published in our last issue. We made an error in proofing the letter in our July 6 issue for which we apologise.

Rest Home survival

Rest homes throughout the country provide great caring stability for the elderly, but there are problems with some rest homes where management are having to make do with what resources they have.

For 26 years our Opunake Cottage Rest Home has provided a great service. Maybe they have no debts, but because of declining numbers, the future of the rest home is up in the air.. Whether it stays open or not, it is the only rest home around the coast, as most rest homes are situated in towns and cities.

Once the rest home's management knew numbers were dropping, why didn't they ask for help sooner rather than later? This is why all towns should and must have a community committee, as it's the only way the towns in our country can survive, as under this present government, they

don't really care as they say they do. I do hope solution is found to help Opunake's Kottage Rest Home to remain open.

*Tom Stephens
New Plymouth*

Labour for everyone

Federated Farmers should be heartened by Labour's

election pledges. For six years our country has had National, and what's happened to their promises? Absolutely nothing. Do our farmers want to be lied to? Too many broken promises. Too many excuses while our whole country is going backwards instead of forwards.

We have immigrants, skilled and unskilled flooding into our country

and taking over our houses, jobs and sooner or later maybe the whole country. Do we want that to happen? I know I don't.

If National is ever our government again, God help us all.

Our Kiwi farmers must now look at Labour for help and stability, as for too long this government has dictated their terms and policies for everyone, not just our

farmers.

If Federated farmers want help, then look at Labour. Labour is a party for everyone. I mean everyone, not just for a select few like National has and always will be as they keep on telling us they care. What a load of rubbish.

*Tom Stephens
New Plymouth*

"Let's create your business growth strategy together"
Your only local community accounting firm



HUGHSON & ASSOCIATES
Accounting for the future, today
Hawera - Opunake - 06 278 4169
OPUNAKE OFFICE
OPEN EVERY WEDNESDAY FROM 10am TO 3.30pm

WANT TO DO BUSINESS IN OUR AREA?



Opunake and Coastal News is distributed free to every home & business within the rural area, bounded in the north by the New Plymouth city border, extending east to Egmont Village and around to the edge of Stratford, south to Hawera city border and inland to Kaponga & Eltham.

We want to be involved with your business. Call today and discuss your marketing options with us.



OPUNAKE & COASTAL NEWS
Promote your business or event in our area, call us on:
Ph/Fax: 06 761 7016 - 23 Napier Street, Opunake
or e-mail us: ads@opunakecoastalnews.co.nz

OPUNAKE & COASTAL NEWS

Registered office: 23 Napier Street, Opunake
PO Box 74, Opunake

Telephone and Fax: (06) 761-7016 a/h ph: (06) 761-8206

e-mail: Advertising ads@opunakecoastalnews.co.nz
Editorial editorial@opunakecoastalnews.co.nz
Accounts accounts@opunakecoastalnews.co.nz

website: www.opunakecoastalnews.co.nz

Editor Bernice M'Kellar -
Journalists/Sales Rolland M'Kellar
Bryan Kirk

Advertising/Production: Vanessa Smith
Tina Chapman

Delivery: Thursday, fortnightly
Registered as a newspaper.



The Opunake and Coastal News is distributed free to every home and business within the rural area bounded in the north by the New Plymouth city border, extending east to Egmont Village, and around to the edge of Stratford, south to the Hawera city border and inland to Kaponga and through Eltham.



Jax (right) and his mate Pud helping out at the new housing development at Okato while amused owners at left look on. A number of new houses are being constructed and also relocated houses have been moved onto the new housing area, formerly farm land in the main street of Okato.

Off the net Men's Rules for Women

We keep getting all these "rules from the woman's side" So we figured it was time for "rules from the man's side" These are our rules! Learn them ,memorise them and use them Learn to work the toilet seat You're a bg girl if its up put it down We need it up you need it down You don't hear us whining about you leaving it down. Sometimes we are not thinking about you Live with it Ask for what you want. Subtle hints do not work, Strong hints do not work!.,Obvious hints do not

work!Just say it Yes and No are perfectly acceptable answers to most questions Saturday= Sports Crying is blackmail We don't remember dates .Mark them on a calendar and remind us frequently. Check your oil Please Anything we said 6 months ago is inadmissible in an argument.In fact all comments become null and void after 7 days. If you think you are fat you probably are. Don't ask us we refuse to answer that question anymore. Come to us with a problem only if you want help solving it. Thats what we

do Sympathy is what your girlfriends are for. If something can be interpreted two ways and one of the ways makes you sad or angry, we meant the

other one. B It doesn't hurt anyone to look and for us its genetic Whenever possible please say whatever you have to say
Continued page 3



If you love Jesus Christ and want to know more visit:
www.messagechurch.com
We are an independent Bible Believing Church

High list placing for New Plymouth candidate

ACT's New Plymouth candidate has been given a high placing on her party's list for the upcoming general election.

Twenty eight year-old personal trainer Anneke Carlson has been placed seventh, meaning that if ACT reaches the five per cent threshold for getting seats in parliament without having to win an electorate seat, she would be in a strong position to become an MP. ACT currently holds one seat, that of party leader David Seymour who is MP for Epsom.

"I'm campaigning solely for the party vote," Anneke says. "If people like me they need to party vote. I'm excited about the opportunity of getting five per cent of the vote and getting into parliament. To be able to have another MP

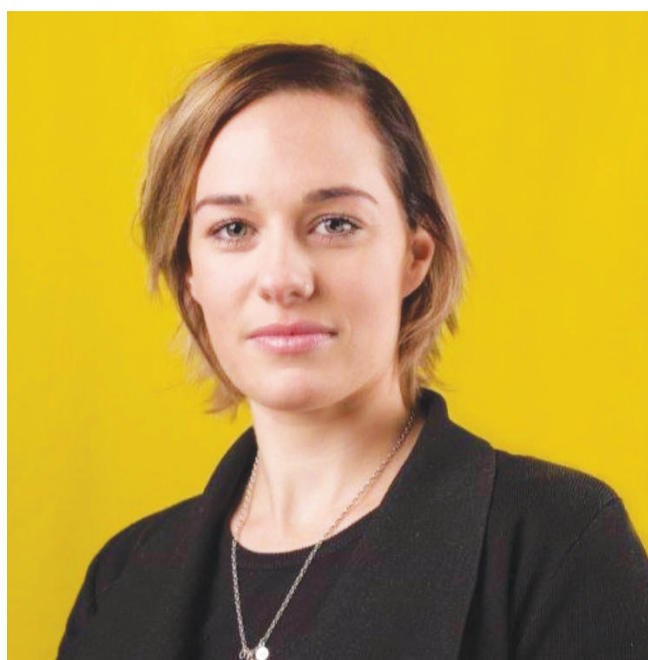
from New Plymouth would be so amazing. This is not about me, it's about our party and our policies and how we are going to action change."

She has been an ACT supporter for the last three years.

"ACT aligns perfectly with my principles and values. I'm a strong believer in free speech, personal responsibility and the freedom to be who you want to be," she says.

She describes herself as a "born and bred Coastal girl," having grown up between Omata and Oakura, and attended Oakura Primary School and New Plymouth Girls High School.

She then headed to Auckland where she had her own personal training business before fulfilling a longstanding ambition to



New Plymouth ACT Party candidate Anneke Carlson.

join the police force, serving as a front line officer in West Auckland for 18 months.

"I wanted to make a difference, but I learned very fast that people need to want

to make that difference in their own lives," she said.

Back in Taranaki she started her own Fitness Studio in New Plymouth.

Her community involvement has included being on the board of the North Taranaki SPCA, something which she says she has a "huge passion" for. She also started a strengthening and conditioning group for men who had had cancer. This had begun as an initiative with the Cancer Society for men who had had prostate cancer but now covers other forms of cancer.

"It acts like a health programme, but it's more for support as a way of getting men to support each other along this journey," she says.

Anneke holds a Diploma in Health and Fitness from AUT and is currently

studying business Law at Massey University.

She believes her varied life experience would be an asset should she be elected to parliament.

"I've seen a lot of the world. I've travelled. I've run my own business. I'm young and I'm passionate about making change."

She sees housing and employment as being big issues in the New Plymouth electorate and wants to appeal to voters in the 18-40 age group. She says she is concerned people aren't taking the trouble to look at party websites and find out for themselves what policies they have to offer.

"When people read about our policies, come and talk to me, and be aware of what we stand for, then we will see our support grow," she says.

Entrench Maori seats says MANA leader

"MANA and the Maori Party may not agree on everything, but there's one thing we do agree on," said MANA Leader Hone Harawira "and that's to entrench the Maori seats."

"Take the integrity of the Maori seats off the table and respect them for what they are - the only place where Maori politicians are required to put their case to Maori people and be held accountable for it"

"It's a tough place to operate. I know. The Tai Tokerau seat encompasses seven general seats, runs from deeply rural Maori communities to

sophisticated urban centres, and includes the most independent thinkers in the Maori world. But it's also a world worth preserving, worth listening to and worth representing."

"Winston used the Northern Maori seat to launch his political career just like Paula Bennett used government benefits to help get started in life. Seems they were both happy to take the good bits when they could, and just as happy to stop everybody else getting something out of it."

"Maori seats came into existence back in 1867. At the time, the Maori population was so high that

if Maori had been given the vote they might have swamped the parliament. Conservatives countered that by giving Maori the vote in just four seats. There were no registration papers, voting took place on a different day to the general elections and less resources were dedicated to the Maori vote."

"Winston stood for one of those seats last century and he wasn't calling for them to be abolished then. And in 1996, he was all smiles when Tau Henare and the boys delivered all the Maori seats to New Zealand First, although his smile quickly disappeared when his boys

ditched him for National. So you can see why Winston doesn't like them. He's never won one himself and the only time his party won them, they immediately lost them all in record time"

"National's dithering is to be expected. They'd be happy to see the Maori seats go, but they've got a deal going with the Maori Party and they'll be relying on them coming through again."

"And I'm not surprised Labour's not said anything on this. Andrew Little talks up the Maori seats, but he needs Winston on board so he'll sit quietly by while Maori get shafted ... again.

Men's Rules for Women

Continued from page 2

during commercials Christopher Columbus did not need directions and neither do we. All men see in only 16 colours. Peach, for example is a fruit not a colour we have no idea what mauve is.

We are not mind readers and we never will be If we ask what is wrong and you say "nothing"we will believe you. When we have to go somewhere absolutely anything you wear is fine You have enough clothes You have too many Shoes

It is neither in you best interest or ours to take any quiz together no it does not matter what quiz BEER Is exciting for us as handbags are for you Thank you for reading this .Yes I know,I have to sleep on the couch tonight,but did you know we really

don't mind that, it's like camping:)

* HEADSTONES *
* GRANITE PLAQUES *
* BRONZE PLAQUES *
* DESIGNER MEMORIALS *
* PORCELAINS PHOTOS & PLAQUES

TALK to Callum or Mandy TODAY
Ph. 06 758 8625
548 Devon St East, Fitzroy
Email: westcoastmonumental@gmail.com
website: stonecreations@kiwi.nz

Coastal Welders 027 255 8677
06 752 8138

BOOK YOUR WINTER SHED MAINTENANCE NOW!

Call today!
We are a local company training local people.
Email us at coastalwelders@xtra.co.nz
WAREA

- New Houses
- Alterations
- Roofing
- All Farm Buildings
- Kitchens
- Decks

For all your building requirements, contact us today
HEARTLAND CONSTRUCTION
48 Allison Street - Opunake - Taranaki - Phil on 027 236 7129

LOVE YOUR HEARING

Lisa Keen + Hearing Aids @ Coastal Care in Opunake

Did you know that you can SWITCH to Lisa Keen Audiology? If you already wear hearing aids or if now is the time to start...

A conversation about your hearing costs nothing

Call 0800 555 676
appointments are limited

Opunake, 26 Napier Street
www.keenaudiology.nz

COUNCILLOR'S COMMENT

One in 10 year event happening every year

Hi all
As I am writing an anticyclone is over Taranaki. There is flooding in New Plymouth and coastal Taranaki, also snowing in southern regions. Also we have been without power for 10 hours.

Opunake has had no power for longer than this. Other parts of the district have had power on and off with some people having no power for days.

Changing weather patterns come with a high cost for the South Taranaki District Council. This includes staff time and after hours' time, also contractors responding to an extreme weather event

or weather bomb. The one in 10-year weather event seems to be happening every year. Is this a part of global warming?

Weather bombs are putting our storm water infrastructure under pressure, while some of our pipes are undersized. If the weather keeps changing and we get large amounts of rain in a short time frame, this means more flooding and a significant cost to council.

The cost to fix the infrastructure by upsizing pipes under the road network and storm water pipes in urban areas is very expensive.

Opunake detention pond



Cr Bryan Roach

council engineers have finalised the design for the pond to raise the bunds on the southern side and dig a

new overflow. Also we will be installing a monitored water level sensor alarm.

New welcome signs for Opunake are to be installed at the north and south end of Opunake. The design is finalised, and we are waiting consent from the New Zealand Transport Agency

Be prepared in an emergency. You should always have a three day supply for yourself. This includes food, water, torches, cell phone, a charger that runs off your car, and any prescription medicine you may require. You can also visit www.gethru.govt.nz for more ideas. Opunake Civil Defence Emergency Centre

is now at the Sandfords Event Centre. We have had a walk through the building to check that all the doors can be opened and all the phones lines are going.

The Opunake groups meeting. A number of organisations working on projects in the town had a meeting on Thursday June 29 to share their various projects with the Council and each other. There were seven groups attendin, from walkways, sculpture trails and community gardens etc. This was a very worthwhile meeting with everyone understanding what other groups are doing. There were a lot of people putting in a

lot of time to make Opunake beautiful. Thank you all

Remember the squeaky wheel gets the oil. If you see it, report it e.g. pot holes, broken street lights, street signs flooding. Call 0800 111 323 or you can do this online at www.southtaranaki.com.

To my fellow dairy farmers, winter grass growth has been slow and very wet, but is slowly getting better. All we need is sunshine. Now that calving has started, remember the new bobby calf regulations come into force on August 1. Looking forward to an awesome season.

From the coast
Councillor Bryan Roach

In search of a new flagship

The possibility of a flagship project every five or 10 years with strict financial management is being raised for discussion and public feedback by New Plymouth District Council (NPDC).

A flagship project could be a new recreation or sports facility, or an initiative that boosts the district's economy – for instance, by attracting a major event.

Alternatively, NPDC could revamp an existing lifestyle

facility, so they can continue to meet the needs of a growing population.

Councillor Stacey Hitchcock says the visionary work of our forebears resulted in the creation of Pukekura Park, Puke Ariki and the Coastal Walkway – award-winning attractions that have put New Plymouth District on the map.

“Success is a long-term project that's built on good financial judgement,” she says. “These flagship attractions

are a legacy of the foresight and investment of previous generations, which have contributed to Lonely Planet naming Taranaki one of the top-two destinations in the world.

“We need to ask ourselves: how can we continue our success for our children? What's our vision and how can we pay for it?”

“By keeping a tight rein on our finances, we think we could plan for a flagship project every five to 10 years.”

Adds Councillor Harry Duynhoven: “Our district is growing fast. It's home to about 80,000 people now and it's forecast to hit 106,000 in 30 years.

“But we want our home to be more than just habitable; we want the mod cons that keep it comfortable and attractive – for ourselves and our visitors.

“We have to recognise that our district can't stand still and we should prepare for the future.”

On this month in history Rainbow Warrior sunk

On July 10, 1985 a Greenpeace ship the Rainbow Warrior was bombed by a group of French secret agents (read: terrorists). The ship was moored in Auckland Harbour. The ship was involved in protests against French

nuclear testing in the Pacific.

One member of the crew, a Portuguese national Fernando Pereira was killed when he returned to save his photography gear.

The police managed to catch two of the terrorists Domi-

nique Prieur and Alain Mafart and they were sentenced to 10 years imprisonment.

France paid NZ 13 million dollars. (How much of this, if any, went to Greenpeace?).

Prime Minister David

Lange allowed the pair to serve their time on Hao Atoll in French Polynesia and (surprise, surprise!) they were soon allowed to return to France where they received high order military decorations.

S.O.S

Specialist Outdoor Services

call 027 605 8437

31 King Street - Opunake



Specialist Outdoor Services include

3.5 ton Digger Hire, Landscaping,

Demolition Work - Total Section Maintenance

Tree Maintenance - Firewood

Lawnmowing - Waterblasting - House Painting

Removal of Greenwaster/Inorganic

25 year experienced independent contractor
Taranaki owned

Contact: DAVE 027 605 8437



SCOOTERMAN & BOBBY

MOBILITY SCOOTERS,
ACCESSORIES, FLAGS,
BATTERIES, TYRES, TUBES
SCOOTER PARTS,



HIGH VISIBILITY VESTS,
POWERCHAIRS and LIFT CHAIRS,
WHEELCHAIRS and WALKERS,
CRUTCHES, CANES
CANE TIPS + STRAPS,
REACHERS,

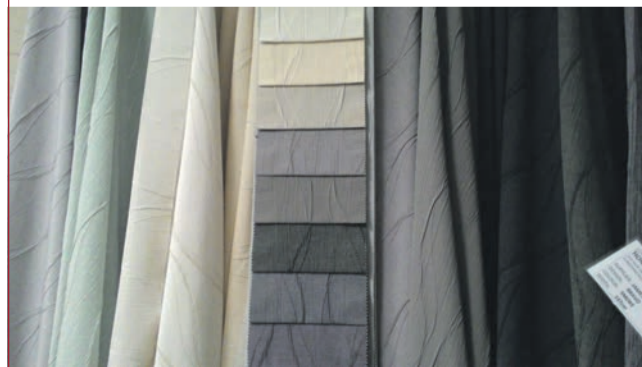
SHOWER CHAIRS + STOOLS, TOILET AIDS,
LIVING AIDS, BATHROOM AIDS,
PEDAL EXERCISERS,
LONG SHOE HORNS,
SWIVEL CUSHIONS and more

View On Line or Brochures can be posted
Free Delivery North Island
FITZROY VILLAGE

769 9061 or 0800 929341

www.scootermandbobby.co.nz

KEEP THE WINTER OUT WITH NEW CURTAINS



FREE LINING:

Poly / cotton / Thermal
/ Blockout



HOMEMAKER
Curtains - Blinds - Soft Furnishings
Free measure & quote Taranaki wide!
Round the Mountain Service

NEW PLYMOUTH
PH 06 757 5532
300 Devon St East,
Northgate Court
NEW PLYMOUTH



- Windscreen replacements & repairs
- Chassis Straightening
- Spoiler Kits fitted
- Private repairs
- Rust proofing
- Plastic welding
- Insurance work
- 24 hour towing

Courtesy vehicles available

FREE QUOTES



Ph/Fax (06) 278 8233
22 Cambria Street, Hawera
Mob 027 249 9489
A/Hrs (06) 278 7314
mr.fix@xtra.co.nz

Forty years selling real estate - I've loved every minute

Paddy Bolger, the oldest and longest standing real estate agent in Taranaki, marked 40 years selling real estate in New Plymouth, on July 7.

Paddy who was born in Opunake and grew up and farmed in Kahui Road, Rahoitu began his career in real estate in 1977 working for a produce company called Hodder and Tolley which had real estate offices in each of their branches throughout the lower part of the North Island.

"To become a real estate salesperson then you only had to have a clean criminal record, there was no training or study," says Paddy. "The first day on the job my manager took me for a drive out and around Inglewood. My training was to wave to people," says Paddy. "They'll soon get to know you," said the manager. Privately "I thought they would be thinking there goes that crazy real estate guy," says Paddy with a grin.

In the first year Paddy says he set himself a goal of selling properties totaling \$200,000 a month which equated to two rural properties a month.

At that time an average farm sold for around \$100,000, a house for \$20,000. To be in the million dollar club you had to sell a million dollars worth of property a year.

My boss said if I sold \$850,000 worth of property in the first year he would give me a bottle of whisky. His tally for the year was 25 properties, 20 of them farms. "I sold over a million dollars, says Paddy adding "I'm still waiting for that whisky."

Reflecting back he says "My best year was the 1988-9 season when I sold 41 properties which totaled in value \$10,780,250. Today that would be equivalent to over \$43 million."

Paddy says there's always some people and properties that stand out. He recalls a bare block of land with no



Paddy Bolger in his New Plymouth office.

power or services of 23.9 hectares which he sold for \$10,000 in 1981. Today the same property would go for \$370,000. "Properties always go up in value, even low value properties."

Another that sticks in his memory was a farm off Mountain Road in Lepperton that was being sold as a mortgagee auction by another agency

"I had a client approach me to buy the property," recalls Paddy. "I rang the vendor who I knew and said I had a buyer for your farm. He doesn't want to deal with a mortgagee sale." The vendor agreed that if he could get x dollars for the farm he could sell it. It was entirely planted in maize and his client couldn't properly see the farm." I had a mate in the Aero Club and suggested we fly over it," said Paddy but as he left the property he encountered the other agent who was working on behalf of the bank. He wanted to know what he was doing there. "You are working for one client. I am working for the vendor and another client," said a quick thinking

Paddy as he drove out. "I think it took him awhile to work out what I meant," said Paddy with a chuckle. All this happened a day before the auction. The buyer agreed on the price and agreements were quickly drawn up and signed. By the time of the auction it was a done deal and all those who turned up at the auction were told to go home. This included as well as the hostile agent, a particularly irate neighbor who had been hoping to buy the property.

So has he ever been threatened physically in the course of his work. No says Paddy but acknowledges the job can be stressful and is not for everyone. He recalls a novice salesperson who he would frequently find with his head in his hands. Mate this job is not for you, you need to get another job he told the chap who took his advice.

The affable Paddy however has found selling real estate fascinating and insists he doesn't get stressed. "Every day is different."

He recalls the days when interest rates climbed to 20% and more, unheard of today. There's also more salespeo-

ple these days.

When he started around 100 houses a month in New Plymouth would be sold by around 40 real estate salespeople. Now with almost triple the number of agents they still sell around the same number of houses in a good month. Explains Paddy "You had to sell more houses back then because the commission you charged was set by government statute and was \$300 plus 2.5% of the sale price. So for a \$20,000 house your commission was \$800." These days agents are free to negotiate their own rates with clients.

They were also not allowed to hold open homes on a Sunday. "There was no selling on a Sunday. It was illegal to do so."

And there were no cell phones, no texts, no computers, no fax machines, no copiers. All agreements were done on a typewriter with a carbon for a second copy.

They spent a lot of time on the phone at night. In the early days Paddy was still on a party line. "My neighbours used to go mad about me being on the phone at night. I used to tell

them that after 9pm the phone was all theirs. My farmer clients would be in bed."

Radio telephones came in in the early 80s which made a difference though they were an unwieldy contraption which cost around \$3000. Fax machines when they came in made a huge difference. Paddy recalls driving to Auckland just to get an agreement signed.

He recalls with amusement that their first "Apple device" cost \$60,000. Shortly after his three partners were persuaded to buy a real estate programme for \$8000 which they went to Auckland to buy only to discover it was incompatible with the Apple computer which they then had to sell and buy another at great expense.

Over the years Paddy calculates he has been involved in the sale of over 2,000 properties and travelled over one and a half million kilometres. He has sold properties all over the North Island and also in the South Island flying clients down with his Aero Club mate.

He laughs as he recalls in the early days he'd arrive for work well before 9am only to be told 'You're not milking cows now Bolger, real estate is a professional occupation

and professional people start work at 9am.' They would often however knock off at 4pm for a bit of time out at the State Hotel - now Joe's Garage.

In conclusion, the affable Paddy says "I have loved every minute in real estate. It's not an easy job, the hours can be long, you can work your own hours but if you don't put in the hours you won't be successful. I've always said I'm not in it for the money but for the satisfaction and joy of helping people achieve their dreams."

A piece of wisdom I was given right at the start of my real estate career by my then solicitor was: "You don't price a property at a price that the first person that sees it buys it, you price a property at a price that the person who likes it buys it at and there is a difference."

Paddy these days is not only a real estate consultant but a fully qualified real estate agent. He completed a Diploma in Business Studies/Real Estate in 1994 at Massey University.

And Paddy's future plans. He's going to continue doing what he loves best: selling real estate.

Congratulations Paddy on achieving such a milestone.

HOW TO BE RUBBISH FREE



Specialising in:

- * FRONT LOAD BINS (1.5m TO 4.5m)
- * JUMBO SKIPS (9m)
- * SUPA SKIPS (6m)
- * LOW SKIPS (4m)
- * 4 x 4 BINS (1.8m)

INGRAM'S Locally owned & operated
Hawera - Stratford - Opunake PH: 06 278 4786



**Trust,
Excellence,
Respect**

No appointments needed
open from 8am until 8pm
7 days per week.

Taranaki's only ACC accredited urgent care and GP clinic with onsite pharmacy and x ray

A complete range of primary and acute care options
Walk in or call us today.

MediCross Urgent Care and GP clinic
8 Egmont Street • New Plymouth
Phone 06 759 8915
Web www.medicross.co.nz

ALUMINIUM JOINERY

Rylock

- Windows
- Bi-Folds
- Sliding Doors
- Entrance Doors
- Conservatories
- Garage Doors
- Inserts/Retro Fitting

Call today for a free measure and quote

IN YOUR AREA EVERY WEEK.

Ph: (06) 758 8073
Fax (06) 758 4157
Email: sales@rylocknp.co.nz
Web: www.rylock.co.nz

OPUNAKE LAWYERS

Thomson O'Neil & Co.

Our Opunake Office is attended by:

Robert England on Wednesday & Fridays for buying and selling houses, farms & businesses; trusts, wills and estates.

Neal Harding on Thursday, for residential sales and purchases, family, district & criminal court matters, civil & business matters.

Stephanie Coulter on Tuesdays for employment matters, house purchasing and selling, refinancing and wills.

FOR ALL YOUR LEGAL REQUIREMENTS

30 TASMAN ST, OPUNAKE

PH: 761 8823

LAWYERS

OPUNAKE FIRE SERVICE

Retrieving a retriever in the dead of night

If you have a fire hydrant in front of your place we would really appreciate it if you could keep it weed and grass free. We do come around twice a year to check and flush them, but weeds seem to grow overnight so the hydrants can soon be covered. It could mean the difference between losing or saving a property if we have to clear it with a spade before we can get to the water.

There should be a blue cat's eye in the centre of the road so we can locate the hydrant at night, a yellow arrow point-

ing in the direction of the hydrant and a yellow lid on the hydrant. If for some reason the hydrant near your place doesn't have one of these, please get in touch with the South Taranaki District Council on 0800 111 323 and log in the problem. If the hydrant is leaking, please advise the STDC so this issue can also be remedied.

We have been relatively busy this fortnight with four call outs. The first was to sparking power wires at Pihama. We were then sent to check out a loose sheet of

iron on a roof. The following day we had another roof that wanted to part - company but we secured it back down as best we could. On the 18th we were sent to rescue a dog that had wandered about 10 metres down the beach cliff but then couldn't get back up again. After a bit of time setting up, Jozien and the crew managed to retrieve the golden retriever, much to the dog owner's delight. Great work Jozien.

The Happy Doggy



The Opunake Fire Service and others on the clifftop at Opunake on Tuesday night.

New help for victims of elder abuse

The recent sentencing of an Auckland woman for fleecing her aged father of his life savings reinforces the urgent need to intervene to change older people's lives and provide services that keep them safe from elder abuse.

When WW2 veteran Ron Greenhalgh died last year his life savings and the money for his funeral were gone, frittered away at the TAB by his daughter Carolyn Alleyne. Branded "cold, callous, heartless and cruel" by her brother, Alleyne is now serving 10 months home detention following convictions for theft by a person in a special relationship.

This example and other sickening cases, combined with our ageing population, means a different approach is needed. Effective and accessible help and intervention needs to be available wherever and whenever victims need it.

This is why the Government has this month launched a new service to intervene to help protect vulnerable older New Zealanders, with increased funding. There will be a wider geographical spread of service providers to help more at risk elderly people than ever before.

The service is available in each region through organisations that have been selected

specifically based on their ability to deliver an effective intervention service for our vulnerable older people. The Ministry of Social Development ran a rigorous procurement and tendering process, with applications being assessed by an independent panel.

In addition to longstanding providers like Age Concern, which nationally receives a funding increase, 18 new organisations will be involved including 10 Age Concern branches which will be receiving funding for the first time.

Following an independent panel process, officials have identified those best able to deliver the new services in North shore. Age Concern North Shore is part of a successful consortium bid for services in the Auckland region.

The new contracts commit organisations to delivering an effective intervention service for vulnerable older people, including better access to culturally appropriate services.

The cornerstone of the new service Elder Abuse Response Service (EARS) is

a free and confidential 24/7 help-line, 0800 32 668 65 (0800 EA NOT OK). Registered nurses will be on the other end of the phone to listen and advise anyone who needs information or support about elder abuse – whether they are the victim or someone who is concerned it might be happening to a friend or family member. Callers will then be referred to their local elder abuse services to get the help they need.

With translation services available to the free 24/7 helpline, and providers selected to ensure services are culturally responsive, the new service will be able to respond to the social, economic, political and spiritual values of our different cultures and ethnic groups, including Maori, Pasifika, Indian, Chinese and Korean communities.

MSD's SuperSeniors Champions are adding their voices to help spread the word and encourage people to speak out and ask for advice and help about elder abuse. They are a group of influential, articulate advocates for positive ageing. These

non-political honorary role models, led by Patron Sir Peter Snell, have made a series of videos which will be on the SuperSeniors website www.superseniors.msd.govt.nz.

All seniors deserve to be treated with respect, with dignity and with care, whatever their background or circumstances.

Older New Zealanders should be able to trust their families and those close to them but the sad reality is that 79% of those who report elder abuse are harmed by family members and 43% of victims live with their abuser. 59% of seniors are disabled in some way and they, along with the wider disabled community, are vulnerable to abuse.

Up to 70,000 seniors will experience some form of elder abuse this year – physical, psychological, sexual, financial or neglect – but the problem is largely hidden with most cases not reported because many victims are too ashamed to admit they are being abused. That has to change. The message is clear: "Elder Abuse is not OK. If you see abuse, please speak out against it."


OPUNAKE & COASTAL NEWS

LIKE ONE OF OUR PHOTOS?

Did you know that photos that are published in our paper are available to purchase?

Call in and see us today.

Ph/Fax: 06 761 7016 - 23 Napier Street, Opunake
or e-mail us: ads@opunakecoastalnews.co.nz

Prices from:

Postcard size \$7 - Medium size \$10 - A4 size \$18

We've got the lot!



- Prompt On-Farm Call Out Service
- Qualified Mechanic/ Mechanic Repairs
- Tractor, Truck & Motorbike
- Wheel Alignment General Tyre repairs

QUALITY TRACTOR TYRES AT COMPETITIVE PRICES

Dean Cameron's Tyre Centre

BROADWAY SOUTH - STRATFORD
PH: 06 765 8401 - 021 061 3895

B & R Barron BUILDER



2475 Surf Highway 45 OKATO
PH/FAX 06 752 4044 MOBILE 0274 448106
Email: barronz@xtra.co.nz

- Houses
- Alterations
- Decks
- Bathrooms
- Kitchens
- Roofing
- Fences
- Concrete
- Cowsheds
- Farm Buildings

We welcome your contributions
Please send to
editorial@opunakecoastalnews.co.nz

Free ECO flue system with selected combos

SAVE UP TO \$749*

The Metro mid-winter sale is on now! Purchase a Metro fire and ECO flue combo during July and August and receive a free ECO flue system with selected model combos.

metrofires

*Terms and conditions apply

Houghton's Plumbing, Heating & Gas Ltd

164 PRINCES STREET, HAWERA 06 278 8883 • www.houghtonsplumbing.co.nz

✓ Plumbing ✓ Gasfitting ✓ Drainlaying ✓ Bathrooms ✓ Heating ✓ Parts & Service

Master Plumbers

WE745683AA

Big powercos fail to impress customers

A Consumer NZ survey of customer satisfaction with energy providers has given the thumbs down to the big five powercos. Consumer NZ chief executive Sue Chetwin said the annual survey found just 45 per cent of consumers were very satisfied with their energy retailer. "This satisfaction rating is lower than rates we've found in the banking and general insurance industries, and dragged down largely by the performance of the big five - Contact, Genesis, Mercury, Meridian and TrustPower," she says. "Our surveys consistently find the big players are letting the side down in the customer satisfaction stakes. This year, their proportions of very satisfied customers were all

below 50 per cent," she says. Ms Chetwin also singled out Bosco Connect, a subsidiary of Mercury Energy. Bosco Connect often serves as the default provider in apartments. "Thirty per cent of customers with Bosco had regularly experienced long wait times to speak to a customer service rep. Its overall rate of very satisfied customers was just 28 per cent," she says. Bosco's power price is a third more than the national average and some tenants in apartment buildings are being given the impression they have no option but to get their power from the company. "We're aware of one letting agent that wrongly told clients they had no choice of energy retailer," she says. Some retailers are doing a

better job of keeping their customers happy. Flick Electric earned top marks in Consumer NZ's survey, with 71 per cent of its customers very satisfied with the company's service. They were also more likely to think they were getting good value for money. Ms Chetwin says Flick's rates are directly tied to the spot (wholesale) price of power. While the rates can offer big savings, customers need to be prepared to weather higher bills when prices spike. Spot prices have recently risen as a result of low lake levels in the South Island. Flick customers worried about rising prices are able to ditch the retailer without penalty as the company doesn't have break fees.

On this month in history Senator Robert Kennedy assassinated

On the sixth of June, 1968 Senator Robert Kennedy was assassinated by Sirhan Sirhan. The killer was angry about things Robert had said in support of Israel. Senator Kennedy was a candidate

for the presidency of the United States representing the Democratic Party and had just won another primary. At the time of his death he was speaking at Los Angeles' Ambassador Hotel.

He is remembered for his fight for civil rights for Afro-Americans and his attempts to deal with organised crime. He was also an opponent of the US military involvement in the Vietnam War.



Babies' choice for weaning

Research from the University of Otago suggests that letting babies feed themselves solid foods appears to lead to them being less fussy eaters. Published in *JAMA Pediatrics*, the randomised trial found children who fed themselves solid foods once they were ready, rather than traditional spoon-feeding

had a better attitude towards food at 12 and 24 months and were less fussy about food than children who were spoon fed. However, the study's original hypothesis - whether such baby-led weaning would reduce the risk of becoming overweight, or other important outcomes - was not supported by the results. They found no evidence of

improved energy self-regulation or body weight when compared to more traditional feeding practices. Co-author Professor Rachael Taylor said there were some limitations to the study, but they found no evidence that infants following a baby-led approach did not eat enough food and there was no sign that the babies were underweight.

Brian Darth Funeral Services

Brian Darth Funeral Services have an award winning monumental mason on-site and can offer a wide range of options to ensure a personalised and special memorial.

Competitive prices with no obligation or deposit required

Stratford 06 765 7672
Hawera 06 278 7675
Email briandarthfunerals@xtra.co.nz
www.briandarthfunerals.co.nz

17 Nash Road
PO Box 218
Stratford







Energy City Motors

MONTHLY *Specials*

Valid until 31/7/17

FIESTA TREND	\$19,990	+orc	(Save \$5,500)
FIESTA SPORT	\$24,990	+orc	(Save \$4,300)
FOCUS TREND	\$27,990	+orc	(Save \$7,300)
FOCUS SPORT	\$30,990	+orc	(Save \$7,300)
FOCUS TITANIUM	\$37,990	+orc	(Save \$8,850)
MONDEO TITANIUM	\$45,790	+orc	(Save \$7,900)
ESCAPE FWD	\$36,990	+orc	(Save \$4,000)
ESCAPE AWD	\$38,990	+orc	(Save \$6,000)
RANGER XLT	\$41,684	+orc	(Save \$7,356)
RANGER XLT (4x4)	\$51,884	+orc	(Save \$9,156)

Paul Plumtree 027 703 7763
Grant Crawshaw 027 441 9812
Dean Walker 027 247 8188



Go Further

SEND US YOUR SPORTS STORIES AND PHOTOS!



OPUNAKE & COASTAL NEWS

Promote your business or event
in our area, call us on:

Ph/Fax: 06 761 7016 - 23 Napier Street, Opunake
or e-mail us: ads@opunakecoastalnews.co.nz

Investing in families and a better NZ

There's been much to be proud of in recent weeks. We are on top of the sailing world after Kiwi smarts beat one of the biggest software companies in the world, Lorde hit the top of the US album charts, and the All Blacks fought an exceptional series.

There's certainly plenty to be proud of in our beautiful country.

You will hear much talk this election about how successful we are as a country. But this country is not delivering for all New Zealanders. That's the sad truth.

This election is about priorities, about choices, about the kind of New Zealand we want to live and prosper in.

My priority, and in Labour's view, the country's priority, is boosting low and middle income-earners and those in need, while investing in basics such as houses, hospitals, schools and infrastructure. This is the right choice to make. After nine years, National's top priority is an unaffordable tax cut that gives a thousand dollars to Bill English and me, while public services face cuts and our people face a housing crisis.

I was speaking to a young couple the other week - both of them are teachers in Auckland. They want a fair shot at the Kiwi dream of owning a place of their own, they want a decent income so they can afford to have a fam-



ANDREW LITTLE MP

ily, and they want properly funded health and education.

That's not too much to ask. It's what any Kiwi family wants. But a small tax cut is not going to get them into a home of their own, and it's going to leave the government with less money to invest in what matters.

That's why the Labour Party took a fresh approach and created a families package that delivers. Labour will put more money into the pockets of low and middle income Kiwi families and those in need.

Unlike National, we won't be spending \$1.5 billion a year on tax cuts that deliver more to the top 10% of income earners than the bottom 60%. Instead, Labour's Families Package is carefully designed to target support where the need is greatest.

Even without the tax cuts, 70% of families with kids will receive a bigger income boost with Labour than under National. Families on middle

incomes will receive up to \$48 a week more in Working For Families with Labour's package than under National.

Because we know that the start of a child's life is vital, every family will be eligible for an extra \$60 a week Best Start payment in their baby's first year. Families on low and middle incomes will be able to continue to receive the Best Start payment until their child turns three.

Winters in NZ can be brutal, especially for our poorest families who do not have a warm home during these cold days and nights. The youngest and the oldest Kiwis alike suffer - we have 40,000 children a year admitted to hospital a year with illnesses related to unhealthy homes. Around 1,600 mostly older folk a year die as a result of cold housing.

That is why Labour will introduce a new Winter Energy Payment of \$700 for a couple and \$450 for a single person, to help older New Zealanders and low-income households keep their homes warm in winter. Together with Labour's Healthy Homes Guarantee for rentals and new grants for insulation and heating upgrades, the Winter Energy Payment will help Kiwis avoid getting sick in the colder months. These measures will keep Kiwis out of hospital and save lives.

These are carefully targeted

policies that will deliver for families and people in need and will save over \$2 billion over four years, compared to National's tax cuts. Simply put, we have come up with a better plan that delivers for middle New Zealand which means that money is available for tackling the big issues facing New Zealand.

This will allow us to make the investments Kiwis want in houses, hospitals, schools and other priorities. We can build houses people can afford to buy, find homes for the homeless, relieve overcrowded schools, reverse National's health cuts and boost mental health, begin to make tertiary education free, and hire 1,000 extra police - all while paying down debt.

It comes down to choices, to what we think is a priority. For me, for Labour, the priority is giving Kiwi families, like those young teachers I mentioned before, a fair shot and the support they need to achieve their own Kiwi dream. It's the right thing to do.

On September 23, New Zealanders will have a clear choice: only a Labour Government will boost Kiwi families' incomes and make the investments we need to build a better New Zealand. It's time for a fresh approach.

Andrew Little MP

National delivering across the country

National is busy delivering a clear plan for our country's future so people can have continued confidence that the country will be led well, should we be returned to Government on September 23.

We started the year with a strong decision to increase police staff and make our communities safer. We set in place a bold international trade agenda, and we made a decision to extend ultrafast broadband to a further 151 towns, which includes Opunake, Okato and Waitara in the New Plymouth Electorate. All great decisions that could only be made because the country's books are now in surplus.

In Budget 2017 we rolled out a raft of policies to improve

public services, invest in the infrastructure needed for a growing country, reduce debt, and share the benefits of growth by lifting family incomes. We've seen the minimum wage increase every year, benefits to families' increase, and an hourly wage increase for care workers.

In just the past week our Ministers have been around the regions announcing initiatives to support growth. We've laid out a \$1 billion housing infrastructure fund which will speed up the building of 60,000 houses across our fastest growing population centres.

We've put in place a \$50 million wrap-around support to get our most at-risk youth into work in regional NZ.



JONATHAN YOUNG MP FOR NEW PLYMOUTH

We've developed regional action plans across the country in partnership with local government and businesses, to lift economic growth. Here in Taranaki we are nearing completion of our Regional Economic Development Strategy which is led by the four Councils in Taranaki. This plan will

outline where our strengths are, our areas of opportunities, and plans for how we can grow our regional economy. Businesses are integral to this, as it is businesses who create economic growth and businesses who employ people, not local councils. Let's not forget that. Check out the progress at www.makeway.co.nz.

The good news is regional NZ is doing well. There are thousands of jobs to be filled. In fact many regions have a shortage of workers. There hasn't been a better opportunity in decades to match unemployed young people with real jobs in our regions.

We're also supporting the regions by investing in the infrastructure they need to grow. Better roads and ultrafast broadband are some of the essentials. We're continuing to roll out a \$212 million programme for 13 important regional roading projects across New Zealand, including \$135 million for the SH3 improvements including Awakino and Mt Messenger bypass, which every person in Taranaki will appreciate and say 'about time.'

Things are looking up and I know when we will be totally on top when we beat Waikato on Saturday 19 August, 5pm at Yarrow Stadium. See you there.

Jonathan Young MP



JONATHAN YOUNG MP FOR NEW PLYMOUTH

A: Corner Gill & Liardet Streets
P: 06 759 1363
E: newplymouthmp@parliament.govt.nz
W: www.jonathanyoung.co.nz
Jonathan Young Mp
jonathanyoungmp



Adrian Rurawhe MP for Te Tai Hauāuru



Labour Taranaki Office
21 Northgate
Strandon
New Plymouth

Office hours:
10am - 2pm
Monday to Friday
3 - 7pm Thursday

labour.taranaki@parliament.govt.nz
06 757 5662 | 0800 ADRIAN

Authorised by Adrian Rurawhe,
Parliament Buildings,
Wellington



Labour

Andrew Little Labour Leader



Labour Taranaki Office
21 Northgate
Strandon
New Plymouth

Office hours:
10am - 2pm
Monday to Friday
3 - 7pm Thursday

labour.taranaki@parliament.govt.nz
06 757 5662

Authorised by Andrew Little,
Parliament Buildings,
Wellington



Labour

Chester Borrows

MP FOR WHANGANUI

HAVE AN ISSUE OR NEED
TO SPEAK TO YOUR MP?

Please email or phone to book a time
to speak with Chester.



Hawera Office
11 Victoria Street
Ph: 06 278 4059

chester.hawera@parliament.govt.nz



Labour kicks off Whanganui campaign

The Labour Party launched their campaign to win the Whanganui seat off National during the weekend.

The seat has been held by National's Chester Borrows since 2005 and for the last three elections his Labour Party opponent has been Hamish McDouall. Neither of these two men are standing this time round.

Labour's candidate Steph Lewis was in Hawera and Stratford on Sunday as part of her campaign launch.

The launch had begun with a meeting in Whanganui the previous evening, which was attended by about 80 people.

Among those there were Labour's finance spokesperson and Wellington Central MP Grant Robertson, Party president Nigel Haworth, Te Tai Hauauru MP Adrian Rurawe and Rangitikei candidate Heather Warren. Russell Marshall who had held the then Wanganui seat for Labour from 1972 to 1990 and been a cabinet minister in the fourth Labour government had also made the trip from Wellington to show his support.

"My team and I have spoken to three and a half thousand people across the electorate already," Steph said.

Speaking to an audience of



Whanganui Labour candidate Steph Lewis and New Plymouth candidate Corie Haddock (second and third from left front row) with Labour supporters in Hawera.

about 20 people in Hawera she said she was the oldest of five children.

"My parents didn't have a lot of money when we were growing up but I was stubborn and pig headed and said, I'm going to university. I got to university as I was lucky enough to get a scholarship. Not all children are that lucky.

"I'm standing as I have a 13 year-old sister, and I don't want her to grow up thinking it's normal for people to live rough and on the streets.

"For the last six years we have seen a housing crisis in Auckland that's been growing and growing and growing. Well guess what? It's happening in Whanganui now. It's time we had a government that steps up and acknowledges there is a problem."

She said health services in rural areas were another concern of hers. The Royal College of General Practitioners had been warning the government for some time about a looming shortage of

general practitioners, and this could be seen in Patea losing its last GP two weeks ago.

She said that the previous night in Whanganui, Grant Robertson told how he had been sitting next to a plumber on a plane who had told him that he didn't want the money he would be getting from a promised tax cut.

"He said he would rather that money be spent on health, housing and education, and that's what we've been hearing all along," she said

Corie Haddock

for New Plymouth

corie.haddock@labour.org.nz
labour.org.nz/coriehaddock
fb.com/coriehaddockfornewplymouth

Party vote

Labour

Authorised by Andrew Kirton, 160 Willis St, Wellington

PAUL'S SECOND HAND SHOP

70 Bridge Street, Eltham

Come to Pauls and get a Big Bargain!

(Cheaper than a hospice)

Midwinter meeting for Kaponga WI members

There was a surprise activity for Kaponga WI members at the June meeting which gave them the choice of having a tattoo.

This proved to be very popular with the majority of the members who were present at the home of Carolyn Nicholas, New Plymouth.

The members also participated in several quizzes which are always popular.

The hostesses, Carolyn, with Diane West and Margaret Arbuckle and some helpers had organised a tasty lunch for which a small charge for Institute Funds was paid.

Some useful hints were revealed which included cutting a pizza with scissors and using white vinegar as a stain remover and fabric softener.

Six members had attended the Kaponga RSA Ladies luncheon which celebrated 66 years of the RSA in Kaponga. A lovely lunch was followed by some games of housie and made for a truly happy day out.

Competition results. Uncooked fudge. 1. Diane West. 2. Nan Stokes. 3. Margaret Arbuckle.

Non flowering shrub. 1. Diane West. 2. Sharyn Hurley. 3. Dorothy Hughes.

Jam dish. 1. Gillian Frandsen. 2. Carolyn Nicholas. 3. Nan Stokes.

at the time. He is our longest serving prime minister and died in office (on board a ship returning to NZ) in 1906.

Although not initially keen on women's suffrage, Seddon later became very keen and it was often highlighted (with pride) in his speeches.

Richard Seddon was prime minister

Electoral facts of our nation

General Election facts

- NZ was the first entire nation to allow women to vote (in 1893). The state of Texas preceded us.
- Kate Sheppard campaigned hard for this right. At her death her surname was Lovell-Smith (after her second husband, following the death of the first)
- Richard Seddon was prime minister

- Although not initially keen on women's suffrage, Seddon later became very keen and it was often highlighted (with pride) in his speeches.

On this month in history Watergate

On June 17, 1972 the Watergate scandal began. Employees of the Republican Party's Committee to Re-elect the President broke into the Democratic Party headquarters at the Watergate Hotel, Washington DC. This act of political espionage was intended to see their opponents files and lists of financial contributors.

Investigations by Washington Post journalists Carl Bernstein (a Democrat) and Bob Woodward (a Republican) eventually implicated

the White House and President Nixon himself who was forced to resign. Prison sentences followed, but there was an inverse relationship between complicity and the harshness of the penalties handed out.

the White House and President Nixon himself who was forced to resign.

Prison sentences followed, but there was an inverse relationship between complicity and the harshness of the penalties handed out.

POWERWORX

Power Supply Rural & Residential

Design, upgrade and repair overhead and underground power supplies

- Powerco Approved
- Underbores - wires and pipes
- Powerline maintenance
- Fault repair
- Subdivision power installation
- Vegetation control around powerlines
- Network connections
- Transformer & line upgrades
- Specialists in rural power servicing and installation

0800 877 746

Taranaki Region
Contact Bruce Wilson Manager
58 Glover Road, Hawera Ph: 06 278 4514
Email: powerworx@obertech.co.nz

SkyWest Aviation

TRAINING FLIGHTS FROM NEW PLYMOUTH AIRPORT

CHARTER • SCENIC • P 027 475 4548

TOP OF THE LINE ELECTRICITY SERVICES

Call us for fault repairs & powerline renewal at anytime.
Privately owned customer powerlines inside your boundary. Free quotes.

**Greg Lewis: 027 453 0326 or
Justin Robinson: 027 445 9162**

The Cottage Rest Home - Opunake

Offering Service to our Community by qualified, caring staff.

- * Permanent Rooms * Respite Care
- * Day Care * Meals on Wheels

Enquiries welcome at The Cottage,
1 Layard Street, or Phone 761 8009

It's time we made education, the children, teachers and support staff a priority

Hi I'm Corie Haddock, Labour's Candidate for New Plymouth electorate. My background is working to improve the lives of New Zealand's most vulnerable – the elderly, people with mental health and addiction issues, and the homeless. I see education as crucial for our future.

From Early Childhood Centres to Universities, education is under pressure. Government funding restrictions are biting schools and ultimately it's the kids – the future of this country – who suffer.

The unsung heroes of our education system are also feeling the squeeze. School support staff - teacher-aids, librarian, lab technicians, kaiarahi and administrators -



Corie Haddock

are being asked to do more with less as schools battle to balance tight budgets. Many support staff are lower paid, with limited job security, no professional career pathway and a government who seem reluctant to listen to their issues. These are the professionals who are work-

ing daily with our most vulnerable children and rather than ensuring they have the resources, funding and skills to work with these children the government refuses to acknowledge them and the important work they do.

The final insult to our state education system is the disempowerment of our teachers. Teachers shape the learning of our children. We all remember a teacher who, at some point encouraged us to learn, grow, reflect. Today's teachers are working with larger class numbers, more challenging children and a bureaucratic system that has shut down their ability to develop innovative, creative children in the name of national standards.

Our free state education sys-

tem is no more and parents are increasingly bearing the costs that the government won't cover. Recent research by education organisation ASG shows that parents can expect to pay up to \$40,000 towards the cost of their children's education. If the schools don't get enough money from government, parents will face more and more costs.

It's time for a fresh approach. A Labour-led government has a plan to ensure education is properly funded. The education system needs to be prioritised so that future generations are equipped to deal with the challenges of our rapidly-changing world.

Contact: Corie Haddock
021 5826 55

Investing in people and the community

New Plymouth Labour Party candidate Corie Haddock has taken issue with New Plymouth MP Jonathan Young over investment in housing..

"With the sale of the Marfell land pending I want to make a final plea to the MP for New Plymouth and Housing New Zealand to reconsider their options," he says."

Both Housing New Zealand and the local Member of Parliament will tell anyone that will listen, building homes in Marfell isn't financially viable and selling the land is

the only option. There are a number of points they fail to acknowledge or understand. "By selling this land it will never again be owned by the people of New Zealand.

Building homes for families should never be just about financial viability, building homes in Marfell is about investing back into a community who has been ignored

by this government for nine years. So rather than selling the land, please invest in community, please invest in people and please invest in our futures."

Big power companies fail to impress customers

A Consumer NZ survey of customer satisfaction with energy providers has given the thumbs down to the big five powercos. Consumer NZ chief executive Sue Chetwin said the annual survey found just 45 per cent of consumers were very satisfied with their energy retailer. "This satisfaction rating is lower than rates we've found in the banking and

general insurance industries, and dragged down largely by the performance of the big five - Contact, Genesis, Mercury, Meridian and TrustPower," she says.

"Our surveys consistently find the big players are letting the side down in the customer satisfaction stakes. This year, their proportions of very satis-

fied customers were all below 50 per cent," she says. Ms Chetwin also singled out Bosco Connect, a subsidiary of Mercury Energy. Bosco Connect often serves as the default provider in apartments. "Thirty per cent of customers with Bosco had regularly experienced long wait times to speak to a customer service rep. Its overall rate of very satisfied customers was

just 28 per cent," she says. Bosco's power price is a third more than the national average and some tenants in apartment buildings are being given the impression they have no option but to get their power from the company.

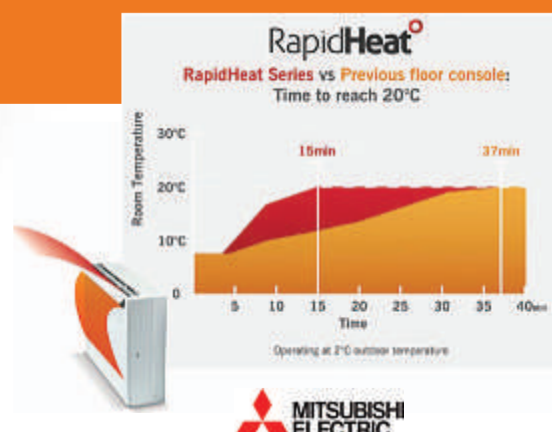
"We're aware of one letting agent that wrongly told clients they had no choice of energy retailer," she says. Some retailers are doing a

better job of keeping their customers happy. Flick Electric earned top marks in Consumer NZ's survey, with 71 per cent of its customers very satisfied with the company's service. They were also more likely to think they were getting good value for money. Ms Chetwin says Flick's rates are directly tied to the spot (wholesale) price of power. While the rates

can offer big savings, customers need to be prepared to weather higher bills when prices spike. Spot prices have recently risen as a result of low lake levels in the South Island.

Flick customers worried about rising prices are able to ditch the retailer without penalty as the company doesn't have break fees.

PERFECT FOR CENTRAL TARANAKI CONDITIONS MITSUBISHI RAPID HEAT FLOOR HYPERCORE CONSOLES



NZ's Quietest Floor Consoles

By using a larger fan motor the unit is quiet and efficient when heating your home.

Even Heat Distribution

The multi vane flow function blows warm air in both an upward and downward direction providing fast, even and effective heating whilst also eliminating draughts.

Sleek, Sophisticated Design

Featuring a new contemporary design the unit can be recessed into the wall to dramatically reduce the depth of the indoor unit (a decrease of 33%).

High Energy Efficiency

The unit has been awarded the Energy Star® by meeting strict energy efficiency standards.

Support Locally So We Can Support You!

Phone Kay today for your FREE Quote 06 765 5290 - 24 Hours



Egmont Plains Community Board supports walkway access

A sixty metre section of the Manaia Walkway will soon get an all weather upgrade. On July 5, the Egmont Plains Community Board voted to grant the Manaia Community Services Committee the \$1332.03 it was asking for to go towards improvements to the Walkway.

There is an existing path along a stretch of the Walkway from the Manaia Golf clubhouse to the western end of the Walkway track which the committee want to upgrade, committee vice president Gordon Chisnall told the board at their July 5 meeting.

"It might be alright in summer time but it's not an all weather track," he said. The track takes in a clearing looked after by Margaret Putt and members of the Manaia Golf Club where rhododendrons have been planted. Gordon says the committee plan to put down half-round railing pegged into the ground and lined with lime fines. They are looking at getting all the work done in the next month.

Gordon and his wife Anne have both received South Taranaki Citizens Awards for their contribution to the Manaia Walkway.

The committee was also asking for funding for potted plants and pest traps.

"The greenkeeper has said he's seen the occasional stoat and we might be able to get rid of them," Gordon



The Manaia Walkway, a walk in progress.

said. Meanwhile Gordon notes the presence of some more welcome visitors.

"The tuis are floating around, and the wood pigeons are something we would like to see more of."

Among the Walkway's other

attractions are the Yarrow Dell featuring rhododendrons planted by the late Melva Yarrow and a grove of pines planted by members of the Manaia RSA to commemorate the World War I Battle of Lone Pine.

His last years were plagued by mental illness and he shot himself (just as his physician father had done). He was just 61.

On this month in history Hemingway born

On July 21, 1899 Ernest Hemingway was born in the United States. He became famous for his terse, spare prose. He wrote poetry, articles, short stories and novels such as 'A Farewell To Arms' and 'For Whom the Bell Tolls'.

He was a close friend of F Scott Fitzgerald, who did all he could to promote

Hemingway.

Hemingway was a correspondent in the Spanish Civil War and he was a very adventurous man – even to the extent of taking great risks. He survived two aeroplane crashes.

He lived in Cuba for many years and was a friend of Fidel Castro with whom he was photographed.

His most prolific writing

period was in his 20s and 30s but he won the Pulitzer Prize and Nobel Prize for Literature in the latter part of his writing career.

He married four times, the first three ending in divorce.

His last years were plagued by mental illness and he shot himself (just as his physician father had done). He was just 61.



48 Brennan Place, Opunake



VIEW By Appointment Only

PRICE ASKING \$195,000

WEBSITE nakirealestate.co.nz/NAKI1922

Perfect first home!

- 3 bedrooms, office and double garage
- Large 1214m² section
- Awesome mountain view, quiet cul-de-sac
- Insulated, aluminium joinery

Advertise your property For Sale here! Call to discuss

Josh Baylis
021 191 5674
josh@nakirealestate.co.nz



**ATTENTION LANDOWNERS
SEEKING NEW PERMANENT
BUSH & PASTORAL SITES FOR 2017**

Respectfully utilising your land resource, with no impact to you and benefits for all.

Taranaki Bees Ltd
Trish Lowe 021 132 1220
Lyllal Field 021 151 6874
taranakibeas@gmail.com

Bucking the Trend - Taranaki Bees Ltd

At a time of huge interest, competition, expansion and payouts for manuka honey, a local beekeeping couple is bucking the trend. Instead they are focusing placing their bee hive locations to allow the bees to forage in areas of our diverse bush and pastoral floral resources. This alternative approach has allowed them to place hives on more permanent sites, thus giving landowners year round pollination benefits which also means less urea expenses for farmers.

"This means we can run our apiaries in our own neighbourhood (both of us having attended Okato College in the mid nineties) where we know the farmers, the seasons, and other apiarists hives in the area and the hive carrying capacities of our sites. All this equates to optimum bee health with minimum impact to landowners from our activities and our support of local business".

"The reduced payout for native pastoral honeys vs manuka and both working day jobs has meant a slower buildup of hive numbers. With four years completed now and hive numbers at approximately 300 at sites from Inglewood to Opunake, some comparable entrants into the manuka industry are now 1000 plus hives.

"Our palleting system of hives means they are secure from stock and do not have to be fenced off, and with a crane for lifting we focus apiary placement to have minimal impact on day to day farming and family operations. With insurances and Worksafe HSE policies in place all our landowners have to worry about is when their honey is going to show up".

With bees generally flying 2-5km from their hives and with their exceptional smell and scouting attributes to find nectar & pollen sources, most properties will have a site that bees can thrive on. A suitable site consists of shelter from prevailing winds, be sunny and accessible by 4WD in all seasons.

If you believe you may have a suitable site for spring 2017 and beyond, and want to enjoy the benefits of honeybees, please get in touch for a no obligation site visit from us.

"Unique among all God's creatures, only the honeybee improves the environment and preys not on any other species." ~ Royden Brown

Soldier recounts experiences driving through liberated Europe

In our last issue we ran a newspaper report contributed by well known Coastal Taranaki artist Graham Kirk about his father John McLean (Jock) Kirk and his experiences in the Western Desert during World War II. Towards the end of the war Jock Kirk was a driver for a New Zealand officer tasked with making contact with liberated New Zealand POWs. Jock wrote about his experiences driving around Europe in a letter he sent back home, which we will be publishing in the next few issues.

It was about the 12th of April 45 that I was asked to take on the job of driving Capt. Hoggans on his trip through France, Holland, Belgium and Germany on XPOW business. I had had the chance of such a trip a week or two before but at that time I had hopes of getting my tip home so I turned it down. I discovered later that the UK personnel were not to be included in the N.Z. Government's exchange scheme for the 2NZEAF so

when this job cropped up I decided to have it on as the job I was on in England at the time had become very monotonous and I reckoned that a trip on the continent would be quite interesting as well as a good way of filling in time.

A couple of days later I was instructed to go to the town of Seven Oaks and pick up a Bedford 15 cwt. Truck and proceed to London. I arrived at Seven Oaks and after a few inquiries found

the M.T. Park where I was to pick up the truck. I had been very curious about this truck, afraid that it would be an open one as most of the Bedfords we had in the camp were, but luckily it had a hood, full windscreen and side curtains, there was no rear canopy and I had made up my mind that such a thing was absolutely necessary. I was told that I could not have one but I meant to get one just the same. Luckily the Corporal in charge was a Scotsman and when I found this out my hopes rose high. I soon got yarning to him and told him that I also was born in Scotland and not born in N.Z. I was quite in agreement with him that there will always be an England so long as Scotland stands. We got along very nicely.

I left the camp with a nice new canopy but it still had to be erected and I never had all the fittings. Still I had done very well and I thought I had better get going while the going was good.

"We were to be at the Port at 9 O'clock to put the bus on board ship. It was nearer midday though when we got it on. It was an American landing craft and the bus had to be backed on from the beach. It was not much trouble, however, the wheels did skid a bit owing to the steepness of the platform, these ships are surprisingly large inside. I never thought they would hold so many trucks.

We had Royalty on board in the form of the Perince and Princess of Luxembourg



Jock Kirk as civilian and soldier.



who were going home after a few years in America, there are a number of ambulances there which appeared to belong to them. I don't know if they are doing any ambulance driving or not but it appeared as though they were, they all wore slacks and seemed to be very nice to everyone. I never spoke to them myself but I know they would not have minded it if I had as they seemed only too pleased to speak to the soldiers and crew. I have since been through their country, an interesting little place.

It was Friday the 13th of April we went on board but owing to the fog we did not sail on that date, we left the following evening.

The food I had on board this ship was the best I have had in the army, and the dinner on Sunday was like Xmas., we had chicken and everything that goes with it, a man sure would have got fat if he had stayed there long. We reached Le Havre next day at 10 O'clock but did not land until evening.

The harbor at Le Havre sure has had a thrashing, it is no use trying to describe it, it just doesn't exist any more, the rest of the town is not so bad. I was not very impressed with the place. I expected to stay the night, but I discovered then what a beggar to go the boss is. He decided to go on to Rouen which we reached at dark. We stopped at a transit

camp there and pushed on to Paris the next morning. The French countryside is very like any other I have seen, the farmers are very old fashioned about their work, but I guess Jerry has pinched most of their machinery and they have had to go back to the horses and bullocks.

Paris is still a very pretty place and does not seem to be very badly damaged. Only along the Seine among the shipping has there been much bombing. The place is full of Yanks and I stayed at a transit camp of theirs for a couple of days, it was actually a very big building and a very poor place to stop, I had to travel on the underground about two miles to the mess, I got very browned off with that and used to sneak into the British mess just as though I was staying there, it was just around the corner from where I was staying, I did not know the place existed when I arrived, otherwise I would have stayed there.

The boss was staying about two miles from me and the truck had to be parked two miles from both of us. The boss knew Paris a little and so he had to chase after me instead of me chasing him, very poor organization indeed.

All the business had to be done at Versailles about twenty miles away so we had a bit of tearing around for a while, it would have

been a big help if we could have stayed there. I had met a couple of Aussies who had been POW and had a night out with them, never again.

I was not sorry when the boss came along one morning and said we were heading for Germany. We left Paris at 10 O'clock passed through Belgium and Holland and were on the German Border that night. The roads were not bad considering the amount of traffic they have had since the invasion, the roads in Belgium were the best, we were able to make pretty good time there.

I can't say much about Belgium because we were in too much of a hurry to stop anywhere, the boss reckoned we were five days late as it was, I hope to have a better look around the place when our work is finished. We passed through Brussels stopping long enough for tea then on to Antwerp.

Antwerp has been damaged a fair bit by doodlebugs, I will say that much but no more. We still had a hundred miles or so to go to Eindhoven and then to Helmond where we were to stay the night, we arrived there an hour or so after dark, and it does not get dark until 10 o'clock by summer time. I was feeling pretty weary and was glad to get to bed. I had the pleasure of sleeping in an officer's bed, it beats me why they should have good beds and we common soldiers none, surely we are all human beings and require the same amount of sleep and comfort, still I suppose this is one of the things we are fighting for and as I volunteered for it I should not complain.

Helmond is quite close to the German Border, we left there at 10 o'clock and headed for a place in Germany called Borghorst. We crossed the Rhine at Wesel where there had been so much fighting, I am glad I was not in it then, that is another place that just ceased to exist. We passed through Venlo which is almost as bad,

SAVE UP TO \$2,000



On Yamaha YZ250F & YZ450F's
Terms & Conditions Apply

YAMAHA
Revs your Heart

1% INTEREST RATE
Offer ends 28/07/2017

2017 YZ250F **\$11,799**

2016 YZ450F **\$11,999**

2017 YZ450F **\$12,799**

NO DEPOSIT PAYMENTS FOR 12 MONTHS ONLY 4.95%
Offer ends 31/07/2017



AG125 **\$3,739** +gst | AG200 **\$4,999** +gst
YFM Grizzly from **\$7,999** +gst
YFM Kodiak from **\$13,499** +gst
YXE Wolverine Side by Side from **\$17,899** +gst

BAILEY
309 South Road Hawera | Ph 06 278 4756
baileymotorcycles@xtra.co.nz
www.baileymotorcycles.co.nz
Open Sat 10am-12noon

CRAWFORD

AGRITECH Ltd

- TRACTOR & MACHINERY SERVICE & REPAIRS
- ON FARM SERVICING
- AIR CONDITIONING SERVICE, REPAIRS AND HOSE MAKING
- SPARE PARTS & FARM OILS
- IMPLEMENTS & ATTACHMENTS - SALES AND SERVICE
- FACTORY TRAINED TECHNICIAN
- TARANAKI & WANGANUI INDEPENDENT FERGIE TRACTOR SPECIALISTS

Ph 06 762 8023

Ian Crawford

Mob 0272 207 701

MASSEY FERGUSON | FORD | SAME | LANDINI | ISEKI | VALTRA | MATBRO
INTERNATIONAL | MERLO | DAVID BROWN | RENAULT | URSUS | JOHN DEERE

MORRIS LUBRICANTS
the winning formula since 1869

Services provided to the Farming Industry

- Septic Tank Cleaning
- Drain Cleaning
- CCTV (Drain and Pipe Inspection)
- Hydro Excavation/Hydro Demolition
- Abrasive Blasting and Coating



South Taranaki Branch
25 Wallscourt Place, Normanby
Ph: 06 272 8725 | Fax: 06 272 8724

New Plymouth Branch
28 Hudson Road, Bell Block, New Plymouth
Ph: 06 755 9150 | Fax: 06 755 1611

Artistic duo look to new horizons

The mosaic sofa on Napier Street has cemented a place for itself in the growing list of Opunake's tourist attractions. The sofa, with its face to the Tasman Sea and its back to Mt Taranaki is the brainchild of Robyn Chard and Debbie Campbell.

Now Robyn and Debbie want Opunake to have more sofas like this one.

"We aren't just stopping at two, we will carry on so long as people are enjoying them," Robyn says. She can see the sofa from her house, so has a first-hand appreciation of how popular it has become, she told the Egmont Plains Community Board.

"Just the other day I saw two carloads with eight people arrive. They left and then another carload arrived. You have heaps of people having picnics there and walking their dogs."

Although it is not in a freedom camping area, people with caravans often drop by just to have a look.

Robyn was seeking funding from the Community Board for a new three seat concrete sofa with mosaic tiles to be placed at a site to be decided on near the Cottage Rest Home.

Robyn said she wanted



Robyn Chard and Debbie Campbell with their mosaic sofa and a rainbow out to sea complementing the one on their sofa.

to place the new sofa somewhere which had a good view of the sea.

Robyn and Debbie started work on the sofa, which overlooks the cliffs on Napier Street, just over a year ago on July 1 and had it finished in time for the Garden Festivals at the end of October. Along the way they got help from Jenny Bennett and others who came and went for varying periods of time.

The seat began with an old farm tough which Bryan Warburton had acquired from Opunake Concrete 2005 Ltd and fashioned into

a seat.

"It all began in Bryan Warburton's head," Robyn said. "His idea was to have a trough cut down the centre. He added the cement and pipes, made the arms and built the plinth for it to sit on."

Debbie says once Bryan finished with the concreting, she and Robyn took over, putting their "random ideas" to work.

"We would see an orca swimming by and think, wouldn't it be great to have an orca, so we put in an orca."

Others suggested rugby

and surfing, as well as an ANZAC theme.

"We just pulled things out that meant something to us in Opunake," she said.

On the morning the Opunake and Coastal News dropped by to talk to Robyn and Debbie, there was a rainbow out to sea which complemented the one tiled on to the seat.

As befitting Opunake's mountain and the sea dichotomy, blue colours feature on the seaward side, while green and grey feature on the side facing Mt Taranaki.

Robyn says they had always wanted to put in something that people would enjoy.

"It's somewhere to come and sit at sunset and have a glass of wine," she said.

Others had helped out with beautifying the surrounding area. Robyn says one of her concerns is being able to control the height of trees which could obscure the view out to sea.

The Community Board voted to approve the funding for another sofa subject to the Council approving its location.

OPUNAKE CONCRETE 2005 LTD
 In conjunction with Bryan Warburton we are proud to be associated with the 'Opunake Mosaics Sofa'
 For all of your concrete needs
 Ph. 027 314 6558
 14 Tasman Street, Opunake

You can **rely on us** for your energy needs

Transform your home - all your hot water, space heating and cooking needs from your trusted local Rockgas supplier.

Count on us - reliable delivery of 45kg LPG cylinders to your home, business, or farm where ever you live.

Locally operated and proud to be part of your community

Call Rockgas Taranaki
 0800 LPG 2 YOU or 06 757 9264

www.rockgastaranaki.co.nz

BAYLEYS



Opunake 142 Tasman Street

<https://www.bayleys.co.nz/Listing/Taranaki/South-Taranaki/Opunake/522376> for more information

Coastal Village Living

bayleys.co.nz Angela Sefton, Ph. 06 759 5191 | angela.sefton@bayleystaranaki.co.nz



For Sale Buyer Enquiry Over \$200,000
 View by appointment

bayleys.co.nz/522376

Angela Sefton
angela.sefton@bayleys.co.nz
 SUCCESS REALTY LTD. BAYLEYS, LICENSED UNDER THE REA ACT 2014

South Taranaki has a lifestyle second to none...here are some comments you may be familiar with...

"It takes me 4 minutes to get to work and 4 minutes to get back home. I just have so much more time for family and leisure!"

"There are so many things to do outdoors here and all so close. I can be tramping on the Mountain in the morning then surfing on the beach in the afternoon."

"The facilities we have here in Opunake are just awesome, whether it's the medical centre, the schools, the Recreation centre, Everybody's Theatre cinema, our library and pools...we have all the amenities of a big city, but none of the hassles."

Sue and Steve and their family have called 142 Tasman Street, Opunake home for over 12 years and loved every minute of it. "Opunake has everything you need in a town with all the best of beach and rural living" says Sue. Steve quickly adds "I love the great spirit of community we have here in Opunake, people just seem to be friendlier and care more and we are sad to leave."

It is a largely renovated, spacious and sunny bungalow on a large section with substantial outbuildings. Set back from the road, it is quiet and private. It has been a wonderful home for these keen surfers and runners but now the family have relocated for work reasons and it is time for this home to have a new owner to love it just as much.

What is on offer here is a true family home. Combining the best of family living with 3 large bedrooms and open plan living, offering space to spread out and yet this home is also private and quiet with easy access to the amenities of the village and with quick access to the boat ramp at Middleton's Bay and a short walk to Opunake beach.

At the front of the property is a large, flat, fenced and landscaped private lawn and garden, offering plenty of space for children to kick a ball, or simply to enjoy the privacy and quietness of a home that is set back from the road. This spacious entrance lends a sense of space and grandeur to the home on arrival.

With three large bedrooms (two with bay windows) and with high ceilings and original doors, this home offers all the traditional bungalow details combined with the benefits of aluminium joinery and some major renovations already undertaken. The master bedroom has french doors opening into the sun room, providing opportunities and options for future development. Two heat pumps and new insulation ensure a warm home through the winter months. Currently the home is a pleasing combination of bright spacious rooms, modern touches and still allowing opportunity for new owners to make their own mark on this home and add further value.

The lounge and dining area is open plan and allows spaces to spread out and enjoy family living. Sun filled with a ranch slider opening onto a small private deck and secure fenced off garden area is perfect for small children and/or pets needing a secure grassed area. The kitchen faces the rear of the property so you can watch the kids on their scooters and bikes utilizing the large concreted area to the rear. This large concreted space and room for cars, boats, surfboards and a workshop/hobby room here with extensive garaging and outbuildings as well as single car garaging at the front of the property. The house has an additional separate toilet with hand basin near the living area, plus a full separate bathroom with a toilet, separate shower and bath. This layout offers plenty of space for family living.

Families who recognise the value of a large bungalow on a large section in a central location will see this as a great opportunity for a family home.

It may also appeal to bach owners seeking space for the boat and surfboards and kayaks combined with a relaxed lifestyle on offer that is ready to just walk in and start enjoying.

Property Investors will see opportunity in the offering with a rental tenancy around \$265 per week (recommended rental return) land bank for future capital gain while enjoying good rental yield well into the future.

With an RV of \$210,000, Sue and Steve are open to any offer over \$200,000. This offers a real opportunity for a buyer to get a great deal here, as 80% of homes in Opunake are listed and sell for a price well over the stated RV.

We'd like to have an open home where people feel very welcome to come along and see this great family home available. Even if you are not in the market please come along anyway. We will have the kettle on so come along for a complimentary cuppa and afternoon tea. We bet you know other people who may need a new home...work mates, family, friends... and one of them may be the person who falls in love with this great home.

Open home Sunday July 23 from 3 - 4pm.
 Complimentary afternoon tea for all visitors.
 All very welcome.
 Please join us...we'd love to see you there!

Entries open for valuable science prize

The 2017 Prime Minister's Science Prize round is open, with New Zealand's most talented established and emerging scientists able to apply for awards worth a combined value of \$1 million across five categories.

The prizes, now in their ninth year, aim to raise the profile and prestige of science among New Zealanders and increase the profile of science as a key contributor to economic wealth and innovative approaches to future challenges.

The major prize, worth \$500,000, is presented to an individual or team whose research has had significant impact in New Zealand or internationally. Previous winners have been recognised for research in areas ranging from health to climate change to new energy technologies.

In 2016, the Prime Minister's Science Prize was awarded to a team of University of Otago researchers, led by Professor Richie Poulton, which is behind the Dunedin Multidisciplinary Health and Development Study, credited with providing the most detailed data on human development ever amassed.

The study, based on researching the lives of about 1,000 children born in Dunedin in 1972 and 1973,

has enabled evidence-based health and social policy-making and changed the way policy makers, clinicians and practitioners think and act, both in New Zealand and overseas.

Professor Poulton says winning the Prize has been a tremendous boost, both in terms of financial support and team morale.

"I strongly recommend other research groups consider submitting an application. Winning was a milestone achievement in the history of the Dunedin Study," he says.

Other categories include the MacDiarmid Emerging Scientist prize, worth \$200,000, which is open to outstanding scientists who have completed their PhD in the previous years, and the Prime Minister's \$150,000 Science Teacher Prize. Last year that prize was won, for the first time by a primary school teacher, Dianne Christenson, who is the curriculum leader for science at Koraunui School in Stokes Valley near Upper Hutt.

Dianne says winning the prize has opened a variety of opportunities for staff and students to work with scientist.

"From learning about the lifecycle of brown trout by growing them from eggs



until ready to release in the Hutt river to participating in a Victoria University study on the effectiveness of citizen science in primary schools, our tamariki are benefitting from these options.

"Our children also have enormous pride in this achievement and share it with all who visit our classroom. They really see themselves as scientists and see a future for themselves in this field. That has really been the benefit of winning the prize," says Dianne.

In addition, nominations are being sought for the Prime Minister's Science Communication Prize, worth \$100,000 and the Prime

Minister's Future Scientist Prize, worth \$50,000.

Entries close on 20 September and the Prizes will be presented in early 2018.

The Prime Minister's Science Prize categories are:

The Prime Minister's Science Prize, \$500,000

This will be awarded to an individual or team for a transformative scientific discovery or achievement, which has had a significant economic, health, social and/or environmental impact in the past five years on New Zealand or internationally

The Prime Minister's MacDiarmid Emerging Scientist Prize, \$200,000

This will be awarded to an outstanding emerging scientist who has had their PhD conferred, within the past eight years (i.e. from 1 January 2009 onwards)

The Prime Minister's Science Teacher Prize, \$150,000

This will be awarded to a registered teacher who has been teaching science, mathematics, technology, pūtaiao, hangarau or pāngarau learning areas of the New Zealand curriculum to school-age children in a primary, intermediate or secondary New Zealand registered school.

The Prime Minister's Science Communication

Prize, \$100,000

This will be awarded to a practising scientist who can demonstrate an interest, passion and aptitude for science communication and public engagement, or to a person who has developed expertise in public engagement with, or communication of, complex scientific or technological information to the public or science community.

The Prime Minister's Future Scientist Prize, \$50,000 tertiary scholarship

This will be awarded to a Year 12 or Year 13 student for outstanding achievement in carrying out a practical and innovative science,

Children take life saving seriously

Brave Kiwi children made more than 400 emergency 111 calls to St John in the 12 months ending March 2017 and 321 of them related to life-threatening and urgent situations such as cardiac arrest.

In late March 2016 St John started evaluating how many emergency 111 calls came

from children and Director of Community Health Services, Sarah Manley, says the results are heartening.

"From our perspective, the fact that 410 children under 16 knew what number and service to call in an emergency is impressive.

"These days children watch

a lot of international online and television productions where emergency numbers are not 111, so it's very reassuring to know that the message is getting through and, at times of extreme stress, children know what number to call and can access life-saving St John services."

One of the children who rang St John was Libby. Her mother, Karen, suffered a serious medical emergency at home last December and 10 year old Libby dialled 111 and stayed on the line with the St John call handler giving vital information and updates until ambulance officers arrived.

"I'm so proud of Libby for knowing what to do during what must have been a very scary situation for her. I don't think she's aware of how impressive her response was. It's so important that parents teach their children to call 111 in an emergency, to stay calm and to know the address or location of where they're calling from," says Karen.

Most of the child 111 calls for an ambulance came from the Auckland

region. Many of the callers described patients having all or some of the following serious symptoms: breathing problems, appearing unconscious, having chest pain, having had a fall or suffering from a seizure.

While the call-takers did not always specifically ask the callers for their age, they are trained to determine when a child is on the phone and can assess a situation verbally so that the right service gets to the patient at the right time.

On this month in history

Bob Charles wins British Open

On July 14, 1963 Bob Charles became the first New Zealander to win a golf major. He won the British Open at Royal Lytham and St Annes in Lancashire after a 36 hole play off. The left hander had rounds of 68, 72,

and 71 for a 72 hole total of 277, which was matched by American Phil Rodgers. In the play off Bob Charles won by eight strokes. Bob Charles never won another major but came runner up in some.

Do you comply with new cooling regulations?

You CAN!!

with

THE ICE TANK

- All your pre-cooling issues solved with one solution
- Pre-cooling made simple
- Fits your existing chiller unit (no extra load on your power supply)
- Maintenance Free
- One size fits all
- Utilises cheap night rate electricity
- Extremely cost effective
- Guaranteed to comply
- So simple but it works
- Locally made in Taranaki
- Installed and serviced by the manufacturer.

Call today for an obligation free quote

Sinclair
Electrical & Refrigeration Ltd

Ph 761 8084
OPUNAKE

sinclairelect@xtra.co.nz
Okato 752 4084
Stratford 06 765 4499
Hawera 274 8084

MASTER
ELECTRICIANS
Electrical Contractors Association of NZ

 **Stepping Stones**

Early Childhood Education Centre

We are now taking Enrolments for 2017.
Don't delay as we have limited spaces.

Please ring Gloria: 06 752 4289 or 027 463 4644
2502 Surf Highway 45, RD37, Okato
SESSION TIMES 8.30AM - 3PM

Matariki celebrations at Opunake Library Plus

Opunake Library Plus hosted Matariki celebrations on June 26. Staff members Deanne Cook and Maria Brewerton were presented with wonderful Maori Craft work made by Dianne James which featured on display for a week.

Unfortunately the morning weather was not so kind to some of the Manuhiri(guests) who were unable to attend or had other prior commitments. To those that braved the coastal weather to celebrate Matariki, thank you all for coming. Matariki te tipua. Matariki te tawhito. Tau mai te wairua. Mai I ngaa ira Atua. Kit e ira tangata. Tihei Mauri Ora. Nau mai te tau hou o Matariki.

Celebrations began with a powhiri(welcome) and Whakatau(meet and greet done by Robyn Davey.

At 11am there was a Whakamoemiti(service) conducted by Te Haahi Ratana o Orimupiko and Apotoro Wairua Punui Whitu with Awhina Gabrielle Whitu and Awhina Ngaroimata Tioko.

The guest speaker at 11.30am was Maata Wharehoka. After lunch there was Kapa Haka (entertainment) from Te Kura Communities Kindergarten o Opunake led by Josephine Smith, Tiffany Nuku, Dianne Chapman and Shirley Dons, as well as Te Kura Kaupapa Maori o Tamarongo led by Puna Wharehoka, Nancy Lee Katene, Grace Gribb, Gabrielle Whitu and Lisa Maka(guitarist).

The Poroporoaki (farewell) followed at 1.30pm.



Back row: Maria Brewerton (librarian), Cr Clem Coxhead, Cath Sheard (libraries and culture services manager), Reg Korau(Iwi liaison advisor), Awhina Ngaroimata Tioko, Awhina Gabrielle Whitu.
Second row: Puna Wharehoka (Kaiako o te Kura Kaupapa Maori o Tamarongo), Maata Wharehoka (Tumuaki o te Kura Kaupapa Maori o tamarongo), Apotoro Punui Whitu, Lisa Maka (guitarist), o te kura Kaupapa Maori o Tamarongo Nga Tamariki o te Kura Kaupapa Maori o Tamarongo.

Thank you

I felt very honoured to be invited to attend and celebrate Matariki at the Opunake Library.

I was warmly welcomed by young and old, and the whole event was explained to me as we went along.

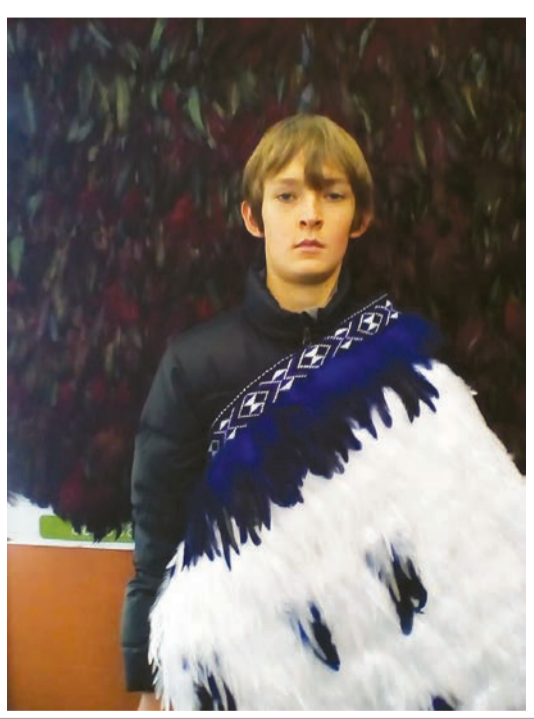
I loved the singing even though I needed a prompt or two from our Iwi Liaison officer Reg when I forgot to go back to the right spot on a

couple of occasions. I especially loved watching the kids be kid,s from sitting by Maata Wharehoka when she spoke about Matariki, to hiding behind the couch when it came time to sing or dance.

Thank you for the opportunity to enrich my life.

Councillor Clem Coxhead

Jimmy Moffitt's story



My name is Jimmy Moffitt and I was asked by Ruahau Rangī to write a story on what me and my friends did at the FDMC Library which we had done about Matariki.

I was also privileged to meet and get a photo with Diane James who created the Matariki display at Opunake library on June 26. After a brief conversation with Diane James I learned about her work on Nga Korowai.

Left. Jimmy Moffitt.

IHAIA MOTORS

for
A GRADE REPAIRS

- Tyres
- Batteries
- Lubes
- W.O.F
- Panel beating
- Painting
- Farm Bikes
- LPG
- All mechanical repairs
- Insurance work
- Radar Detectors

AT COMPETITIVE PRICES.

Tasman St, Opunake
Ph (06) 761-8502



Corkill SYSTEMS LTD

5 TASMAN ST, OPUNAKE
FREEPHONE: 0800 107 006 PH: 06 761 7531 - FAX 06 761 7336

We offer a range of
Silent Diesel and Industrial Tractor Mount Power Generators
There is a full range of cabling and outlet options to suit your personal requirements.

- Dials facing cab (one man operation)
- Heavy Duty Driveshaft
- Heavy Duty Construction
- 1000RPM Direct PTO Driven (no gearbox or belts)



Three Sizes to Suit all sheds:
37.5 kva 62.5 kva 93.5 kva Other sizes available on request



Check out our new website
www.corkillsystems.co.nz

Craig Corrigan ELECTRICAL

OPUNAKE



- Generators Pto + Diesel Sets
- All Cowshed Wiring
- Farm Control Systems
- Domestic Wiring
- Electrical Inspections



No job too big or too small
Wiring the Coast - 20 years experience
Ph: Craig on 027 207 7775

Experts dismiss nanoscience

Scientists have hit back against a lobby group claiming nanoparticles found in baby formula are potentially toxic.

The Sydney Morning Herald reported that tests commissioned by Friends of the Earth had found the presence of nanoparticles in several Australian infant formula products. Food Standards Australia New Zealand (FSANZ) said it had reviewed the available information and concluded it did not contain new evidence to suggest the products posed a risk to infant health and safety. Carers of infants should not be alarmed by the report, or concerned about the safety of the products, the regulator concluded. The University of Adelaide's Dr Ian Musgrave says that "nanoparticles have become the latest bogeyman, despite nanoparticles occurring naturally". "Infant formula is

based on milk, which naturally contains calcium and phosphorus (as phosphates)," he said. "One of the forms of calcium phosphate in milk is hydroxyapatite. So it is unsurprising that hydroxyapatite is found in dried infant formula which is predominantly dried milk powder." Professor Ian Rae from the University of Melbourne called the report "classical nano scare". "The clue that the investigators are pushing an agenda is in their repeated use of the phrase 'needle like' to describe the crystals of hydroxyapatite. It's a 'dog whistle' for 'you will be feeding your babies sharp objects if you use these products'." "The truth is that these particles are the natural form of hydroxyapatite and they dissolve easily in the acids of the digestive system,"

Prof Rae said.

University of Auckland nanotechnologist Dr Michelle Dickinson also says many nanoparticles occur naturally.

"I wouldn't be worried about it if I was a parent, she said.

Dr Dickinson said scientific jargon was being used to scare parents. Dr Jess Berentson-Shaw says the latest scare story was bad science. The report from Friends of the Earth "is not actually a scientific study," she says. "It's a report by a charity that paid to have some lab tests done, so it holds little scientific weight. It is not entirely dissimilar perhaps to getting your child's IQ assessed: fascinating to you perhaps, but fairly meaningless on any scientific level." Guardian reporter Melissa Davey says that the latest scare highlighted the need to



teach children health literacy in schools.

"I'm convinced it's the only way to address the proliferation of scaremongering articles in the media that misinterpret medical science," she said.

"And after several years of reporting on health and medical science, I'm also convinced it's the only way to stop people falling victim to the pseudoscience promoted by questionably qualified but influential

wellness bloggers, the anti-vaccination crowd, and by advocates of homeopathy and other useless alternative medicines."

New health service helps people with osteoarthritis

A new online programme is helping people manage their osteoarthritis and share with others who have the condition.

The programme, called MOA (Managing OsteoArthritis), provides access to an online community and a personal

health coach. People can also track their mood or symptoms, keep a food and exercise diary, and access other information and resources via the web and mobile app.

For Sandra Thomas, 52, MOA is a godsend. She lives in a small rural community where there is no GP at present and very little medical support. She's been told that her osteoarthritis of the hip, while extremely painful, is not severe enough for her to be seen by the hospital.

"Having a MOA coach makes all the difference. It's very helpful to be able

to speak to her, usually by phone once a week, but I can message her at any time and she'll get back to me.

She has explained a lot of things that I have experienced but didn't know the answers to," Sandra said.

Sandra doesn't drive and has only casual employment, and she could easily become socially isolated in how she manages her osteoarthritis, were it not for the community MOA provides.

"You feel like you're not on your own – there are lots of people out there with the same problems. When you see what other people are

doing, it gives you a boost and you can help them sometimes too," she said.

The online community is proving to be one of MOA's most popular features, according to Arthritis New Zealand's Zoe Pullman who manages the social side of the programme. She says people use the app to connect with each other, share their experiences and support one another.

"Osteoarthritis has no cure and with a lack of treatment options, people often just have to manage the condition themselves. Many find that daunting because it's hard to be motivated on your own

to stick to a programme. MOA gives you the tools to get started by providing all the information in one place plus the support and encouragement of a personal coach and others who know what you're going through," Zoe said.

Sandra agrees. "Everything is there for you. I'd recommend it to everyone." MOA was developed by

Melon Health and Arthritis New Zealand. It is being piloted in Whanganui, Wairarapa, Taranaki, Lakes, and West Coast DHB areas with funding from the Ministry of Health's Mobility Action Plan.



OPUNAKE & COASTAL NEWS

LIKE ONE OF OUR PHOTOS?

Did you know that photos that are published in our paper are available to purchase?

Call in and see us today.

Ph/Fax: 06 761 7016 - 23 Napier Street, Opunake
or e-mail us: ads@opunakecoastalnews.co.nz

Prices from:
Postcard size \$7 - Medium size \$10 - A4 size \$18



0800 BULL HIRE 285 544

Well Grown Jersey Yearlings

BVD Tested and Vaccinated

Graziers - we can handle large numbers

Satisfaction guaranteed or we'll take them back no charge.

AYRSHIRE and FRIESIAN 2yr olds for the cows later on

For a price ring Sean @

0800 28 55 44

Washer & Co. Rahotu, Oakura, Pio Pio, Te Kuiti

BRANDERSON HOMES LTD
PRE BUILT HOMES



OFFICE LOCATED AT: 37 HAUTAPU ROAD
CAMBRIDGE
TELEPHONE 07 827 3901

email: branderson.homes@xtra.co.nz - website: www.brandersonhomes.co.nz

Please send us an information pack about your Transportable Pre-Built Homes

Name: _____ Ph No: _____

Address: _____ Style/Size: _____

Please mail to : Branderson Homes Ltd, PO Box 434, Cambridge, 3450

Review heralds new era for rural PRIME service

A wide-ranging review of New Zealand's Primary Response in Medical Emergency (PRIME) service has been successfully completed and work will soon begin to implement its recommendations, says New Zealand Rural General Practice Network Chief Executive Dalton Kelly.

"After a very professional and totally comprehensive, year-long process involving numerous stakeholders, the review outcomes have been accepted and we can now get on with the work plan. It will be great to work with our colleagues including St John and NASO (National Ambulance Sector Office) during the next phase."

The review has been "a major piece of work and

those involved have done a fantastic job".

"All of the things we had hoped for have been approved including a review of current funding arrangements, administration structures, clinical governance and roles, training and appropriate medicines and equipment," said Mr Kelly.

"Expressions of interest will soon be sought from PRIME clinicians with the right skill set to chair a National PRIME committee," said Mr Kelly.

Key review outcomes include providing a safe, effective and sustainable service that allows a balance of local autonomy and central control and is aligned to the themes in the New Zealand Health Strategy 2016: people-powered,

closer to home, value and high performance, one team and smart system.

While the issue of funding was not part of the review, it has been accepted by the Ministry of Health and ACC that there will be a formal review of PRIME funding. This was proposed by the steering group to address sector concerns that PRIME funding is not sustainable.

Outside of the review, \$251,000 had also been allocated to PRIME in the recent Budget, Mr Kelly said.

In 2016 NASO, on behalf of ACC and the Ministry of Health, asked for formal feedback on the PRIME service. The purpose was to better understand the issues being raised by PRIME practitioners and

other stakeholders, and to establish whether a formal review was required.

NASO received feedback from a range of sources, including St John, PRIME practices and practitioners, primary health organisations (PHOs), rural service level alliance teams (SLATs), PRIME committees, Emergency Care Coordination Teams (ECCTs), National Rural Health Advisory Group (NRHAG) members and New Zealand Rural General Practice Network members.

In June 2016, NASO decided to proceed with a formal review of PRIME and this was completed in the first half of 2017. The scope of the review was limited to recommendations that can be implemented within the

existing funding envelope.

The review also aims to ensure that PRIME will continue to be relevant and add value to rural ambulance services, PRIME practitioners will feel well supported in their role, PRIME will continue to meet its objectives in a sustainable manner and that PRIME funding arrangements will be well understood, with improved use of available resources.

The PRIME (Primary Response in Medical Emergencies) service aims to ensure high quality, timely access to pre-hospital emergency treatment in areas where access to appropriate clinical skills are not available, or where ambulance service rural response times may be longer than usual. PRIME is

provided by specially trained medical practitioners, nurse practitioners and registered nurses (PRIME practitioners) who assist ambulance services. It is a 24-hour a day, seven-day a week service where PRIME providers are on an on-call roster.

PRIME service responses are initiated by emergency ambulance communication centres. The purpose of the PRIME service is to provide timely access to clinical skills that have the potential to improve outcomes for medical emergencies (including injuries) in rural areas.

The PRIME service is funded by the Ministry of Health and ACC, and is administered by St John. Funding is provided for training and delivery of PRIME.

Watch out country music



Award-winning country music singer Elizabeth Maindonald (7).

"Watch out country music."

This was the comment of one of the judges who appraised Elizabeth Maindonald from Eltham, who continues to win prizes at the Muddy River Country music Awards, Wanganui - for the third year running. For the last two years she has won the 'Littlies' section at this event.

Her most recent success was on Saturday July 8 where the seven-year-old won the *Traditional* section and was second equal in the *Gospel* section, as a Junior

The winner of the *Gospel* section was another Eltham girl Shamika Hoeta. Obviously, there is a lot of talent in the township.

Elizabeth was competing as a Junior for the first time, which meant that most of her fellow competitors were much older than her, as the upper limit of the category is 12.

Elizabeth sang 'The Black Hills of Dakota' in the *Traditional* section and 'I Come To the Garden Alone' for the *Gospel* section. "I was happy," she says simply of her success. Was she nervous? "No, not really,"

she replies with a smile.

The three judges (who are themselves country music performers) appraise each contestant on three main categories Presentation, Musical Ability and Entertainment Value. These three categories are broken down into sub-categories.

For Presentation the judges score for appearance, introduction, memory of lyrics, microphone technique and stagecraft.

Musical ability has the following sub-categories; timing, phrasing, pitch and diction.

Entertainment Value includes personality and overall enjoyment as sub-categories.

We'll leave the final word

to one of the judges, who wrote this about Elizabeth: "Wow. Great stage presence and pitch. For such a young girl it's perfect. Great potential and power." That surely says it all!

Elizabeth has just received an exciting invitation. She has been asked to sing as a guest artist at the Wairarapa Country and Western Music Festival in January, 2018. This is to be held at Tauherenikau, near Featherstone.

Elizabeth's parents, Lindsay and Anita, who are themselves award-winning country music singers, are very proud of their daughter's achievements and promise.

www.gotitcoveredsouthtaranaki.co.nz

Got it Covered
South Taranaki

**Canvas work, PVC, Saddlery,
Vehicle Interior restoration, Motorbike seats, Trailer covers, Sunshades, Tonneau covers, Swimming pools and Sandpit covers.**

Got it Covered South Taranaki
P. 06 278 8255 - M. 027 508 8958
11 Fitzgerald Lane, RD 13, Hawera
www.gotitcoveredsouthtaranaki.co.nz

- New Houses
- Alterations
- Roofing
- All Farm Buildings
- Kitchens
- Decks

For all your building requirements, contact us today

HEARTLAND CONSTRUCTION
48 Allison Street - Opunake - Taranaki - Phil on 027 236 7129

SEND US YOUR SPORTS STORIES AND PHOTOS!

OPUNAKE & COASTAL NEWS

Promote your business or event in our area, call us on:

Ph/Fax: 06 761 7016 - 23 Napier Street, Opunake
or e-mail us: ads@opunakecoastalnews.co.nz

Home advantage fails to clinch farmer titles

A 28 year-old sheep and beef farmer from Milton in the South Island is this year's Young Farmer of the Year. Nigel Woodhead took out the title at the National Final held in the Manawatu on July 7-9. Nigel, who represented the Otago-Southland region also took out the Agri-Skills and Agri-Knowledge Challenges. Hamish Best from East Coast finished second and won the Agri-Business

Challenge. Andrew Wiffen from Tasman finished third. The only female finalist, Lisa Kendall from the Northern region won the Agri-Growth Challenge and finished fourth. Arjan van't Klooster from Aorangi won the Agri-Sports Challenge. Taranaki-Manawatu was represented by Okato farmer James Lawn who finished fifth. He was the last of the seven finalists to have qualified for the finals,

having won the regional final held in Hawera back in April. Teams from Feilding High School had dominated the regional final for the Teen Ag competition held in Hawera, while teams from South Makirikiri School near Marton and Hiwinui School near Palmerston North had gone on to qualify for the national finals in the Agri Kids competition. As with the Young Farmer

competition, having a home advantage in Feilding appeared to count for little as teams from Whangarei Girls High School and Geraldine High School won the Teen Ag and Agri-Kids titles respectively. The newly crowned Young farmer of the Year Nigel Woodhead graduated with a Bachelor of Agricultural Science before working at Midlands Seed in Ashburton for five years,



James Lawn (right) chats to MC Te Radar at the Taranaki-Manawatu Young Farmer of the Year regional final held in Hawera in April. James went on to take the regional final and finished fifth in the national final.

Farmers celebrate opening of Southern Dairy Hub

The world-class Southern Dairy Hub has been formally opened, marking a new era for dairy farming supported by research in the deep south. About 200 dairy farmers and supporters gathered to celebrate the opening of the cutting-edge research and demonstration farm near Invercargill. Dairy contributes \$750 million to the Southland economy and makes up 20 percent of jobs in the region, according to a report by the New Zealand Institute of Economic Research.

Southland and South Otago farmers and businesses have invested \$1.25 million in the hub through the Southern Dairy Development Trust, and principal shareholders DairyNZ and AgResearch have invested \$5 million each. Conversion of the 349-hectare property began in November last year and the hub is now in operation, and research underway. Southern Dairy Hub chair Maurice Hardie says the opening is an important milestone for the region, and New Zealand.

“Carrying out research in the southern region’s climate and soil types will be invaluable. We’re excited that research is now underway to drive better farming practices, environmental initiatives and increased efficiency on farm.” The first research trial is comparing the feed regimes of cows on fodder beet with those on kale. Research to validate DairyNZ’s Forage Value Index (FVI), a ranking system for ryegrass cultivars, has also started. The study will

compare the performance of high and low FVI ranked perennial ryegrass cultivars under realistic dairy farm management conditions. The pastures have been sown and measurements will begin in spring. DairyNZ chief executive, Dr Tim Mackle, says Southland and Otago are very important regions for dairying. “DairyNZ is investing in the Hub to help dairy farmers and communities identify the best options for profitable, competitive, and sustainable dairying. The future is all about fixing real challenges with real solutions, and that’s where the science at the Southern Dairy Hub is crucial.” AgResearch chief executive Tom Richardson says the Hub will be part of a network of high quality



Livestock at the Southern Dairy Hub.

maintaining its important presence at its Invermay campus near Mosgiel. “We looked at the map and saw a gap in our capability in the deep south, and the huge

are doing research that is relevant to the local needs.” “With the challenge of growing the value of New Zealand’s agricultural exports, while preserving and

Consistency!

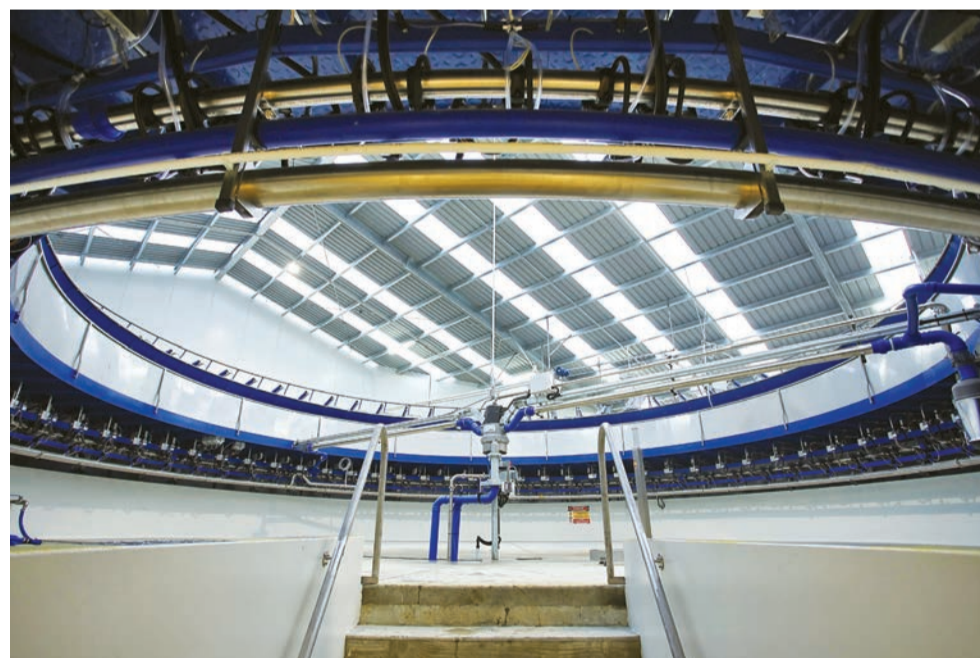
MOOKIE

COASTAL-VIEW MOOKIE-ET
MOGUL X OBSERVER X SHOTTLE

DO THESE COWS MILK?
YOU BE THE JUDGE!

CONTACT US TO ADD DAUGHTERS LIKE THESE TO YOUR HERD

WORLD WIDE SIRES • NEW ZEALAND
www.wwsiresnz.co.nz
Email: office@wwsires.co.nz • Free Phone: 0800 60 70 70



The milking shed at the Southern Dairy Hub.

new science facilities across New Zealand that support the land-based industries. AgResearch is also investing in new joint facilities with partners in Lincoln and Palmerston North, while

benefits that permanent, purpose-built research facilities in southern conditions could provide. Working alongside local farmers also makes good sense so that the scientists

enhancing the environments we farm in, there has never been a greater need to invest in quality science. That’s what we will see here at the Southern Dairy Hub, and other new facilities.”

We welcome your contributions
Please send to
editorial@opunakecoastalnews.co.nz

The next phase of development at the Hub is an agri-business centre to provide facilities for training, education, and farmer events, as well as office spaces.

Taranaki club named NZ's best

Taranaki's fastest-growing NZ Young Farmers club has picked-up a national award for its work in the community.

Central Taranaki Young Farmers has been named New Zealand's best Young Farmers club.

Seven clubs were all vying for the accolade.

"We're stoked. It's awesome. Our members are all so proud of the club's achievements," said chairman Nick Brown.

NZ Young Farmers board member Nadine Huitema said judging was difficult.

"We assess clubs based on their community involvement, social activities, professionalism, strategic planning and their involvement with schools and other clubs," she said.

Taranaki has five Young



Club members at the Young Farmer of the Year Grand Final.

Farmers clubs.

"What really stood out for the board was how Central Taranaki Young Farmers has pulled the entire Taranaki district together, connecting members from different

clubs," Nadine said. "It wasn't that long ago many thought the organisation's Taranaki district was a 'lost cause'. However, the club has proven this certainly isn't the case."

Central Taranaki Young Farmers has almost 50 members, who meet on the first Tuesday of each month at the Toko Tavern.

"Our club has a culture that people want to be a part of,"

Nick Brown said. "We have a strong committee who're all approachable and we work hard to make people, especially new members, feel welcome."

The club held a BBQ dinner

believe we play an important role in making sure people don't feel isolated and that they're getting off farm and socialising."

It's hoped the club's growing membership will



Central Taranaki Young Farmers chairman Nick Brown.

last month to welcome new young farmers and rural professionals to the district.

"We had a fantastic turnout. It was great to meet a couple of people who'd just moved here from Northland," Nick said. "I

lead to more people taking part in district contests and skills days.

There are more than 70 Young Farmers clubs situated around the country.

Cancer check app a hit at Fieldays

A mobile app is now making it easier to get a mole checked by skin cancer specialists - which in turn is making a real difference in the fight against skin cancer.

Kiwi-made app, Firstcheck is the first app to provide remote consultations with local skin specialists, encouraging people to get suspicious skin lesions checked.

Celebrating the difference the company is making, Firstcheck was recently invited to join other health innovators in the new 'Health Hub' at Fieldays 2017 - and to use its technology to conduct free skin checks by sending photos of moles to skin specialist clinics around the country. And making it easy to get a spot checked resonated with Fieldays

attendees who seemed all too likely to put off getting a skin check.

"The number of times I heard someone say 'I've been meaning to get this checked for a while'," commented

Firstcheck CEO, Hayden Laird. "And luckily they finally did - as we picked up 10 skin cancers at Fieldays alone. For me it just reinforces how critical it is to make it easy for everyone to get checked, as and when they notice something," Laird says.

While New Zealand has the highest rate of skin cancer in the world, a recent survey has shown that fewer than 4 per cent of New Zealanders are currently getting an annual skin check*.

Two out of every three

New Zealanders will be diagnosed with some form of skin cancer in their lifetime, and each year around 69,000 Kiwis are diagnosed with skin cancer.

Even though skin cancers and melanomas can usually be treated successfully if caught early enough, Kiwis are putting themselves at serious risk with such a low percentage of skin checks, says Melanoma New Zealand's CEO Linda Flay. "Annual full body skin checks are recommended but any time someone notices a new or changing mole, they should get it checked as soon as possible."

Firstcheck has recently been profiled at a number of key medical conferences - including the Australasian College of Dermatologists "Annual Scientific Meeting" in

Sydney, the Skin Cancer College Australasia Congress in Brisbane, and the GP CME conference in New Zealand

Since its launch in New Zealand in late 2016, and in Australia in early 2017, the Firstcheck app has been downloaded tens of thousands of times.

"It's been great to see so many New Zealanders and Australians embrace Firstcheck as a tool to monitor their skin health - and engage with local skin specialists," says Laird.

"What gives us the greatest thrill is when patients choose to get in touch with us to say how Firstcheck has helped them. Early detection saves lives. But it is also powerful to provide someone worried about a mole with peace of mind that actually that spot isn't something they need worry about."

NZ FARMERS LIVESTOCK

Hawera Calf Sales
at Hawera Showgrounds - Mondays
through July and August

Fridays starting July 28th
Stratford Calf Sales at Showgrounds.
Active buyers in the paddock for friesian
bulls and beef calves

FOR MORE DETAILS contact your local NZFL agent

Tim Hurley - 027 445 1167
Bryan Goodin - 027 531 8511

Washer & Co

0800 4 SPILT MILK

0800 477 458 OR 0800 479 264

Serving you without fail for the past 21 years!

Yes, we are collecting fresh colostrum now!

20 cents a litre plus GST

10 cents a litre for Spilt Milk

We offer

- 1: Prompt Payment
- 2: Collecting around the clock
- 3: Confidentiality guaranteed
- 4: No detergent please
- 5: Here for the next 4 months

Washer & Co

Rahotu or Oakura

CALF MILK PUMPS

\$99.00

+ GST

Elite Farm Solutions

Ph 06 761 7265 - 23 Tasman Street, Opunake

\$180.00

+ GST

\$180.00

+ GST

GOLD SPONSORS



COASTAL RUGBY



**Proud to sponsor
Coastal Rugby**



**HAREB DEKEN
MOTORS**

Proud sponsors of Coastal Rugby
331 St Aubyn St - New Plymouth - Ph 06 759 9957
Freephone: 0800 289 493

Season ends for Premiers



Rick McKenna breaks through the middle and is supported by Troy Stephenson. The Prems lost a heartbreaker 17 -14.

Coastal Premiers made their way to Yarrows Stadium on Saturday for the final of the 2017 Premier competition. The opposition was Tukapa, who proved to be too strong on the day. The final score was 17 - 14 to Tukapa. Bugger. Congratulations to the Division 1 and Division 2 Coastal teams on winning their finals.

Many thanks go out to all club sponsors and to the many supporters who travelled to New Plymouth and supported Coastal teams throughout the season.

Special thanks to the committee who keep the club going with all the behind the scenes work.

See you all for the 2018 season.

Prizegiving

**Friday 21st July at Rahotu
from 7pm.**

Buses are running, live band Slam will be playing at the conclusion of prizegiving.

Everyone welcome, players, supporters and public. See you there.



Proud sponsors of Coastal Rugby
179 Courtney Street, New Plymouth
0800 BTW Survey (0800 289 787)
www.btwcompany.co.nz



Proud Sponsors of Coastal Rugby
158 Powderham Street, New Plymouth
Ph: 06 758 1199 Fax: 06 758 1188
Members of the Independent Insurance Brokers Assn.

**Young & Carrington
Lawyers**

Proud Sponsors of
Coastal Rugby
LAWYERS FOR THE COAST
Thank you for your support

**MERIAL
ANCARE**



Proud Sponsors of
- Coastal Division 2 Team
- The Coastal Rugby Club Farm



**Peter Moffitt
FarmWise®**

Ph: 06 751 1265 - Mob: 027 242 1812



29 Norwich Ave, Spotswood, New Plymouth
Phone: 022 031 5072

**JOHN BLUNDELL
BAYLEY'S
REAL ESTATE**



BRUCE THOMPSON
FREEPHONE 0800 654 779
MOBILE 027 4455 285



RURAL CARRIERS
Proud to support Coastal Rugby



Phone: 06 752 4280
027 752 4280

COASTAL RUGBY



Proud sponsors of Coastal Rugby

5 Tasman Street Opunake, Taranaki
PHONE 06 761 7531 - 0800 107006

GOLD SPONSORS

NZ FARMERS LIVESTOCK

For all your Livestock requirements

Contact

Tim Hurley - 027 445 1167
Bryan Goodin - 027 531 8511

WASHER & CO BULLHIRE

PH 06 752 1135 FAX 06 752 1131
EMAIL: BULLSHOP@XTRA.CO.NZ



Proud sponsors of Coastal Rugby
CHRIS STANDING - 021 791 246

PenningtonConsultancy

Aspirational growth through knowledge, Innovation and Implementation

www.pennington.net.nz

Neil Pennington
MBA (Marketing) BBus, DipMgmt, AFNZM
Managing Director

027 454 2284
0800 946 533
neil@pennington.net.nz

Coastal are Division 1 Champions



Victorious captain Richard Beckett holds the trophy aloft as the Div 1 team prevail over Spotswood 19 -13.

The semi final against Stratford/Eltham played in Rahotu was a game that had a lot at stake. Win you get to the final, lose and the season was over.

With that in mind the team showed why we were worthy of a place in the final. Tireless contributions by the forwards gave Jarrod Davey at half back, quality ball to set the backs alight and tries were scored by David Hughes, Jordan Fleming, Matt Sim and Jarrod Davey with Jamie Fevre converting two and a penalty giving

us a 27-21 win and saw us headed to Yarrow Stadium to take on Spotswood United in the final. Yarrow Stadium ground 3 was the venue for the final. Bleak weather leading up to Saturday meant conditions looked in favour of the much heavier Spotswood team. However the day turned out to be a cracker and as the Coastal Division 1 team have shown all season their character, belief and determination was about to be tested. Without a lot of possession for long periods

the boys shut down just about everything Spotswood threw at us. We were able to capitalise on a couple of mistakes which led to Trent van der Poel scoring two tries with Jamie Fevre converting one to take a 12-7 lead at the break. The message by Alan and Tom at half time was quite simple, to eliminate mistakes and secure the ball. Spotswood struck back and took a 13-12 lead with 20 minutes to play, however the hard working Coastal forward pack combined to get us over the line from

a five metre scrum giving Richard Beckett the try with Jamie converting putting us in front 19-13. Spotswood then put us under immense pressure with several lineout drives and attacking from everywhere, but it was Coastal's day and with enthusiastic loud support from the huge crowd who had travelled to support us we managed to hold on and take out the Championship. Final score 19-13 with the player of the day award going to everyone.

Gerard Kalin (Manager)



Proud to be supporting
COASTAL RUGBY

COASTAL AGRI SERVICES
Our Promise... "PEACE OF MIND"

97 TASMAN ST, OPUNAKE PH 06 761 7079



Proud sponsors of the
Coastal Division 1



For Spreading, Fertiliser, Lime and Log Cartage

SUPPORTING THE COAST FOR OVER 50 YEARS! Opunake 761 7341 - Okato 752 4124

JFM CONTRACTING
Ph: Jared McBride
on 06 752 4558
or 027 4775 701
Go Coastal!



Taranaki 0800 889 880



BUTLERS REEF

1133 Main South Rd, Oakura
Ph: 06 752 7765
www.butlersreef.co.nz



Phone: 06-763 8668

BLUE RIBBONS SPONSORS

VALUE BUILDING SUPPLIES
 1 Katere Rd, New Plymouth
 Ph 06 759 7435

 **BRIAN HILL**
 BD HILL BUILDING
 Ph: (06) 752 4210 (027) 444 2703


HEARTLAND CONSTRUCTION
 FOR NEW HOMES, ROOFING, ALTERATIONS,
 KITCHENS, DECKS AND ALL FARM BUILDINGS.
 FOR ALL YOUR BUILDING REQUIREMENTS.
 PHONE PHIL: 027 236 7129

KARAM'S
 Clothes on the Coast
 Surf Highway 45, Opunake - Ph/Fax 06 761 8139

 **Coastal Vets**
 Coastal Veterinary Services
 PH 06 761 8105

PICKERING MOTORS
 PH: 06 761 8363 - Tennyson St - Opunake
 GO COASTAL!

 **Newton Gorge Joinery**
 67 Breakwater Rd, Moturoa
 Ph: 06 751 5065

 John & Jacinta Hurley
 NEW PLYMOUTH - INGLEWOOD
 STRATFORD - HAWERA

Eftpos Specialists (Taranaki) Ltd.
 113 Gill St - 06-759 4148

 **Simpsons Tyres and Service Centre**
 22 Leach Street - New Plymouth
 Ph: 06 758 0780 29

 **CAMPBELL CONTRACTING LTD**

SINCLAIR ELECTRICAL
 31 Tasman St, Opunake 2120
 Phone: 06-761 8047

 **ravensdown**
 0800 100 123 | ravensdown.co.nz

 **cruiseabout**
 The Cruising Specialists Phone 06 758 4967

 **Naki Bounce**
 Bouncy Castle Hire Ph 0273354635
 www.nakibounce.co.nz School Gala Days

 **J.Swap**
 STOCKFOODS Ph 0800 457 927

 **COASTAL RUGBY**

Congratulations Coastal Division 2



The champion Div 2 team make it four in a row as they overwhelm Patea 34 - 9..

Showing support Go Coastal



John Demchy shows his support for the Division 1 side.



Coastal supporters arrive at Yarrow Stadium.

Two out of three ain't bad

Continued from page 1



Coastal Division 1 pack down against Spotswood United.

Coastal supporters were upbeat when they arrived at Yarrow Stadium for the Club championships on Saturday. After all, the Premiers and Division 1 and Division 2 teams had all made their respective finals. Six finals were being played that day, from Under-13s right up to the Premiers.

"It will be three out of three definitely," John Van der Poel said.

First up was the Division 2 final where Coastal went in as defending champions against Patea. Coastal had taken the title the previous year without losing a game, but this year they had lost to Bell Block and Patea in the qualifying rounds.

Coastal Division 2 coach Dean Wadsworth said an under strength Coastal team was carrying a lot of injuries

when they travelled to Patea earlier in the season and lost by around 25 points.

"We had outplayed them in the forwards but didn't have a backline and they scored three good tries, but we knew that when we played them again it would be different."

Come the semifinals and Coastal took their revenge on Bell Block who they had also lost to earlier in the season.

"Last year we had been right through the season unbeaten," Dean said. "We never lost a game. Sometimes you need a loss to realise what it's like to win again."

With two tries and a penalty, Coastal was ahead 13-6 at halftime. In the end Patea was never able to break the Coastal defence,

giving Coastal a 34-9 win.

"It's finals rugby, so it's who turns up," Dean said. "Our focus was to start well and we did, not just in the first 10 minutes but in the first hit. We had good defence and the forwards played nice and tight. We used the ball out wide where we had good ball."

Try scorers for Coastal were D.Warren, S.Drought, J.Hussy and P.Barron. Coastal's other points came from the boot of C.Hammersley and M.Potter.

From the Number 2 ground

it was uphill to the Number 3 ground to see if Coastal could make it two out of two, with the Division 1 team take on Spotswood United.

The previous weekend, Coastal had booked their place in the finals with a 27-21 semifinal win over Stratford-Eltham at Rahotu.

In the first half, Coastal lacking possession were able to shut down Spotswood and picked up two tries to Trent Van der Poel and a conversion to Jamie Fevre to be 12-7 ahead at the break.

Halfway through the second half, a couple of penalties had given

Spotswood a 13-12 edge.

Coastal scored again with a try to Richard Beckett following a five metre scrum to regain the lead 19-13, a margin they were able to

retain until the finish.

The final match of the day and the one everyone was waiting for was the Premiers final against defending

Continued pages 24,25

Congratulations boys on another successful season

PROUD TO SUPPORT COASTAL RUGBY

Rusty 027 280 0743 | Michaela 027 274 5662

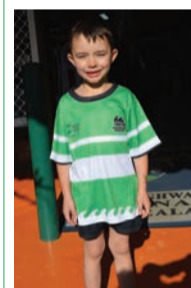
www.campbellcontractingltd.com



Karams Clothes on the Coast Would just like to congratulate

COASTAL RUGBY CLUB

on their 2017 season



NEW IN STORE THIS WEEK

WARM-UP OR SUPPORTERS TEES

Kids \$39.99
Adults \$49.99

Karams Clothes - Home of Coastal Rugby Supporters Gear



Sandford Bros Ltd & Spreading Sandford Ltd

Phone Auroa - 06 274 5852
2118 Skeet Road, Hawera
Toll Free 0508 726 336



Sandford Livestock Ltd
Phone Hawera – 06 278 0045
189 Fairfield Road, Hawera
Phone Waitara – 06 754 8069
101 Mould Street, Waitara
Toll Free 0800 707 404

We deliver for ALL suppliers of PKE



No **GIMMICKS**
JUST GREAT PRICING

DELIVERING PKE TO THE COAST FOR OVER TEN YEARS

CALL US NOW FOR COMPETITIVE PRICING

Rural & General Cartage
Specialising in:
* Palm Kernel
* Aggregate
* Fertiliser
* Bale Cartage

Livestock Cartage
Depots in:
* Okato
* Hawera
* Auroa
* Waitara

Ready Mix Concrete
Depots in:
* Hawera
* Wiremu

Ground Spreading
* Spreadmark Certified
* 4WD Trucks
* GPS Proof of Placement



RENTAL VEHICLES

Congratulations Coastal Rugby from Pickering Motors. Transporting the boys to their games for 23years!

CHARTER BUSES - VANS - TOUR BUSES
ALUMINIUM SCAFFOLDING FOR HIRE

\$35 per day, \$50 weekend.
More than 6 days \$30 per day.

WATERBLASTER FOR HIRE

Petrol 3000 psi 15L/minC
Cost: Half day \$90, Full day \$120, Weekend \$130. Friday after 3pm return Monday 9am.
Bond for waterblaster and scaffolding \$50.

For more information contact Tracey or Christine at

PICKERING MOTORS

11 TENNYSON ST OPUNAKE PH (06) 761-8363
0800 22 11 20 Email: pickering.motors@xtra.co.nz

The **GRUNDFOS** RANGE OF PUMPS

FARM RETICULATION

- Washdown Pumps
- Drainage Pumps
- Submersible bore-hole pumps
- Multi-stage pumps, centrifugal pumps
- Domestic pumps

DOMESTIC WATER PRESSURE SYSTEMS

Water on demand to your home.

GRUNDFOS DEALER SINCE 1980

Proud Supporters of Coastal Rugby Farm
 Congratulations to Coastal Rugby Club
 on a successful season from the Team
 at Coastal Agri Services

COASTAL AGRI SERVICES
 Tasman St, Opunake - Ph (06) 761 7079
 24 HOUR SERVICE - 7 DAYS A WEEK

Two out of three ain't bad



Captain Fantastic Richard Beckett shows commitment to the loose ball.

Next issue due out August 4
 Phone us today to advertise
 761 7016



Our timber quality is the best.

DIRECT FROM OUR OWN MILL



Farm Pack Specials

1m³ of H3 Sawn only

\$529⁰⁰ +GST

No² Battens H3 50x40mm

Minimum quantity of 800. In packs of 400.

99c EACH +GST

MINIMUM QUANTITY OF 800 | SPECIAL PRICE ONLY UNTIL 31/08/2017 & WHILE STOCKS LAST

VALUE

BuildLink

NEW PLYMOUTH 1 KATERE ROAD PH: 06 759 7435
 INGLEWOOD JAMES ST PH: 0800 245 535

www.valuebuilding.co.nz



Division 2 sideline supporters.

FOR ALL YOUR SPREADING REQUIREMENTS



SPREADING
FBT
 LIMITED

SPREADING
 * Modern spinner/blower spreaders
 * Equipped with GPS mapping
 * Proof of placement technology

Proud Sponsor of Coastal Division One Champions
Congratulations on Top Club Award 2017

**06 752 4124 Okato (Dermott Lane)
 or 06 761 7341 Opunake
 FBT 0800 432 866
 www.fbt.co.nz**

Two out of three ain't bad



Jacob Gopperth is supported by Mike Summerell.

Continued from page 24

champions Tukapa, who Coastal had defeated earlier in the season.

The previous weekend, Coastal had won their semifinal against Southern 25-8, while Tukapa had edged out Spotswood United 16-15.

Tukapa came with their own Waimate Chook mascot and it wouldn't have been a Taranaki rugby fixture without Ferdinand also being there, pacing along the sidelines and waving to the fans.

Tukapa had three unsuccessful penalty attempts before Coastal drew first blood with a try to Rick McKenna. The try wasn't converted, and Tukapa took the lead with a converted try of their own before Coastal slipped ahead again with a penalty and an 8-7 lead at half time.

The lead seesawed throughout the second half as the two teams traded penalties. Eighty minutes was up and Coastal were ahead 14-10 when Tukapa were on attack and scored the winning try just before the ref blew his whistle for full time, giving them a 17-14 win. All Coastal's

points had come from Rick McKenna.

Coastal coach Aaron Fisher was philosophical about the result.

"It's never over until the whistle goes, and both teams played till the whistle went," he said.

"I couldn't have wished for a better bunch of guys to coach. They were built

of heart, and they showed plenty of it today. They are all local boys from the coast and I wouldn't have expected anything less."

To Tukapa belonged the victor's crown, but with three teams in the finals Coastal did pick up the trophy for being the top club.

A small group of Coastal supporters in the stands stood

and applauded the Coastal players as they headed into the dressing rooms.

For Tukapa the result meant being club champions for one more year. For Coastal who last won the Premier championship in 2012, it means having to wait for 2018 for another crack at being first in Taranaki.



Danny Warren escapes the clutches of the Patea defence.

Pennington's
ACCOUNTING AND BUSINESS PLANNING

We congratulate Coastal Rugby for such a successful rugby season. We feel privileged to be associated with such an amazing club

62b Carthew Street, Okato Office: 06 281 1565
Neil: 027 454 2284 Aileen: 027 454 2288
neil@pennington.net.nz www.pennington.net.nz

Congratulations Coastal Rugby on your successful season
GOOD LUCK FOR 2018

Sinclair Electrical & Refrigeration Ltd
Phone 06 761 8084

Proud sponsors of Coastal Rugby

NEW ZEALAND FARM SOURCE LIVESTOCK
Dairy for life

Congratulations Coastal Rugby TOP TARANAKI CLUB 2017
From the team at Farm Source Livestock

- Sell your calves at weekly auctions (Mondays & Thursdays)
- Premium prices possible
- Taking Service bull orders now

Sheldon Keech 027 222 7920
Jason King 027 684 2443

For results call Farm Source Livestock

EARN FARM SOURCE REWARD DOLLARS ON ALL FARM SOURCE LIVESTOCK PURCHASES & SALES*
*T&Cs apply. See nzfarmsource.co.nz/rewards

0800 548 339 | nzfarmsource.co.nz/livestock

SEND US YOUR SPORTS STORIES AND PHOTOS!

OPUNAKE & COASTAL NEWS

Promote your business or event in our area, call us on:
Ph/Fax: 06 761 7016 - 23 Napier Street, Opunake or e-mail us: ads@opunakecoastalnews.co.nz

NZ FARMERS LIVESTOCK

Congratulations Coastal Rugby Top Taranaki Club 2017

Tim Hurley - 027 445 1167
Bryan Goodin - 027 531 8511

OPUNAKE & COASTAL NEWS

LIKE ONE OF OUR PHOTOS?
Did you know that photos that are published in our paper are available to purchase?
Call in and see us today.
Ph/Fax: 06 761 7016 - 23 Napier Street, Opunake or e-mail us: ads@opunakecoastalnews.co.nz

Coastal Vets
COASTAL VETERINARY SERVICES LTD

Congratulations Coastal Rugby on your success in 2017
From the team at Coastal Veterinary Services

24 Tasman St, Opunake Ph: 06 761 8105 Fax: 06 761 7173
70A Victoria St, Kaponga Ph: 06 764 6899 Fax: 06 764 6234

New Plymouth Yacht Club supports development of Breakwater Bay

Yachting competitors from all over the country are more likely to make the journey to New Plymouth for a regatta if the facilities at Breakwater Bay were better, says the New Plymouth Yacht Club's Commodore, Jason Holdt.

"Our goal is to hold at least one National or North Island regatta each year," says

Commodore Holdt.

"These events attract competitors and their support crew from right around New Zealand. Improvements to the boat ramp and jetty would enhance the user experience and encourage more use, but this would have to be matched with parking facilities."

Established in 1939, the New Plymouth Yacht Club has operated from Port Taranaki and Moturoa Beach since then. The club's last significant event was the Optimist North Islands in November 2016 and it attracted 180 competitors and their support crews.

"Over our nearly 80 year

history of sailing events, we have enjoyed a really good working relationship and support from the Port and its owner the Taranaki Regional Council," says Commodore Holdt.

"While we can launch our smaller boats directly from the beach, the boat ramp is essential for our rescue boats

to be able to launch and for our larger yachts such as trailer sailers. We're very keen to enter into a dialogue about how Breakwater Bay can continue to be developed as a great recreational facility that works for all users."

"Developing the area with consultation from its users would lead to its increased

use with potential financial spin-offs for businesses in the area and the city," suggests Commodore Holdt.

"On good weekends during the summer, particularly if there is a sailing or fishing competition on, then parking is an issue which is a deterrent for users of the area."

North Taranaki have big win at Stratford

North Taranaki dominated the Challenge quadrangular indoor bowls tournament played at Stratford on July 8-9. North Taranaki had large victories over all the three other districts participating and gave warning they will be very difficult to beat in the

upcoming Paterson Trophy zone finals.

Results were: North Taranaki 48 Upper Hutt 24, North Taranaki 53 Taranaki 19, North Taranaki 47 Hutt Valley 25,

Upper Hutt 62 Taranaki 10, Upper Hutt 33.5 Hutt Valley 38.5, Hutt Valley 44

Taranaki 28.

Overall points and first placing went to North Taranaki with 150 followed by Upper Hutt Valley (119.5) then Hutt Valley (107.5) and Taranaki (55).

Ray Finlay

North Taranaki squeeze past Manawatu

The Zone 3 Paterson Indoor Bowls final was played at New Plymouth on July 15-16 and the districts competing were Taranaki, North Taranaki, Manawatu, Wanganui and King Country.

After six rounds of play on Saturday, Manawatu held a five point advantage over hosts North Taranaki.

Three further rounds were played on Sunday morning, and after all of these games the final result hinged on the last game of pairs between North Taranaki and King Country being played. North Taranaki were victorious and won the Paterson trophy with 97 points followed closely by Manawatu with 94.5 points, followed by

Wanganui with 63.5 points, King Country with 63.5 points and Taranaki with 38.5 points. North Taranaki will now go forward to defend their Welsh Trophy to be played in Hamilton in early September.

Ray Finlay
Publicity Officer
Taranaki Indoor Bowls



Capuchin Monkeys Dixie and baby at Brooklands Zoo, New Plymouth.

Manaia Golf Club results

July 8. Men's results. 1., G.Elliott(40). 2. D.Hurcomb(36). 3. G.Hastie(36). 4. P.Elliott(35). Twos. G.Gibbs(15th). P.Elliott(15th).

Junior Plus and Minus. Junior. Jayda Sharp. Intermediate. Kieran Taylor.

Senior. Ashton Sharp. -. +5.

Juniors. Olivia Symes and Jayda Sharp first equal. Intermediate. Lucas Symes and Carter Symes first equal.. Seniors. Cody McPhail and Cory Symes first equal.

July 15. Men's results.

Nett Rd. 1. Jim Ngere(65). 2. W.Codlin(68). 3. C.Symes(70). Twos. C.Symes 9th. S.Jones 9th.

Juniors. Putting. 1. Kieran Taylor. 2. Kahu Harrison. Gross. Kieran Taylor and Kahu Harrison first equal.

Our next issue is due out

August 4

Phone us today to advertise

HAWERA GLASS AND PANEL LTD
AUTOMOTIVE - DOMESTIC - COMMERCIAL
Info@haweraglasspanel.co.nz • Ph 06 278 5628 • Matt Meads 027 248 8286 • A/H 027 333 9899

- Windscreen Replacement for cars, trucks, buses, tractors, earthmoving equipment
 - Chip Repairs
 - Insurance work
- Radiator replacement, repairs and Panel beating
 - Plastic welding and bumper repairs
- Tinting vehicles, houses, commercial buildings
 - Reglazing – windows, doors
- Glass Splash backs – kitchens, bathrooms or any area you choose.
 - Mirrors – bathrooms, dress mirrors
- Vehicle wing mirrors – Cars, Trucks, Tractors
 - Pet Doors
 - Acrylic/Perspex
 - Site Glasses
 - Retrofit-Double Glazing
 - 24/7 call out service

WE ARE A SMITH AND SMITH AUTHORISED DEALER AND MTA MEMBER

23 Princes Street Hawera
06 278 5628
Email info@haweraglasspanel.co.nz

Taurima Rest Home

You'll Be With Friends

Permanent rooms plus respite care and day care all available today

85 CLAWTON ST
NEW PLYMOUTH
PH. 06 753 5538
www.taurimaresthome.co.nz
manager@taurimaresthome.co.nz

Taranaki Agents for:

ARCHGOLA OUTDOOR SHELTERS
NZ LOUVRES Love your Lifestyle

OTHER PRODUCTS: Ziptrak Blinds | Shade Sails
Umbrellas | Custom Structures

OUT BACK CREATING OUTDOOR SOLUTIONS

COLETTE STANLEY
8 Seaview Road
0800 363 433
info@out-back.co.nz
www.out-back.co.nz

Garden festival turns 30

Taranaki's long-running garden festival is heading towards a spectacular milestone – its 30-year anniversary.

From a community rhododendron event to a fully-fledged festival, the Powerco Taranaki Garden Spectacular attracts people from around the world and New Zealand with nearly 70 per cent of visitors from outside Taranaki in 2016.

Last year, the festival generated \$2.8 million in GDP in Taranaki, led to 16,130 visitor nights in accommodation and 52,491 visits to festival gardens.

Now it's time to celebrate. This year's festival will feature 47 gardens, the Mitre 10 Frida Floral Fiesta at the White Hart Hotel and a new section highlighting art in gardens, says festival manager Leigh Gatward-Cook.

"There will be a lot of amazing painters and sculptors, from Marianne Muggeridge to Terry Stringer."

The festival, which runs from October 27 to November 5 was launched in New Plymouth last week with guest speaker Astar speaking about her flower-focused and horticultural journey.

After 18 years as a floral artist expert on TV One's Good Morning show, she now has her own YouTube channel Astar's Place.

She's a big fan of Taranaki and the garden festival: "This is the longest running festival and it really should be renamed the New Zealand Taranaki International Garden Festival. To me 30 years is huge."

There is a full events calendar, starring Ginette McDonald (From Tawa to

Hawera – and Everything In-between), house and garden and Chapman-Taylor tours and the Gardena garden speaker series.

The topics covered in the series include New Zealand coastal natives, lifestyle planting, hanging baskets, propagation and plant combinations and a garden-to-vase workshop.

There is also a floral art show, a sustainable backyard event and the landscape design project.

This year's offering is *Radiant Garden* by acclaimed digital artist Tim Gruchy. Inspired by the lush landscapes of Taranaki, his work will be projected on to the TAFT building on Brougham St each evening during the festival.

But the stars of the 10-day festival are the glorious gardens Taranaki has to offer, Gatward-Cook says.

"The festival has managed to stay fresh over the years by introducing new gardens and by having some who open every other year and having gardens in development," she says.

With deep roots, the festival began 30 years ago as a community garden event and has bloomed, says Elaine Gill, who was the driving force behind the first "rhododendron festival" in 1987.

At its height, there were about 100 open gardens and trains brought people down from Auckland for the festival.

For the first 12 years, the festival was run by Tourism Taranaki. After she left the organisation, it was taken over by a trust for a further five to six years and was then taken over by TAFT.

Jenny Oakley, renowned for her hanging basket



Hanging basket star Jenny Oakley has had her Manaia garden in the festival for the entire 30 years.

Photo credit: Jane Dove Juneau.

demonstrations, has had her Manaia garden in the festival since the beginning.

"I think there have been small tweaks to the festival each year to improve the visitor experience because that's what it's all about – we want people in Taranaki," she says.

Adding events and ticketing were also part of the improvement puzzle. "Sponsors wanted accountability so the ticketing system was

adopted."

TAFT CEO Suzanne Porter says the festival is all about stunning gardens and welcoming committed gardeners.

She says the festival is unique to Taranaki, offering a world-class experience that brings in new audiences every year. "Nowhere else in the world can you have this experience with the combination of gardens, flora and fauna and the gardeners."

WAIMATE HOTEL
 Tuesday nights - Pool Highest Break
 from 7pm-9pm
 Winner take all
 Kitchen open 7 days
 Ring for night bookings

49 Main Rd, MANAIA
 Ph: 06 274 8341

FABULOUS FIBRES
 an exhibition of Fibre Art
 and Wearables by

CREATIVE FIBRE
 Central &
 South Taranaki.

Runs from 3 – 28th July
 at The Village Gallery, Eltham
 10am – 3pm Monday – Saturday
 Informal Workshops/Demo's each Saturday
 DURING EXHIBITION.

The Village Gallery 166 High Street, Eltham
 OPEN MONDAY - SATURDAY 10AM - 3PM

NEW ZEALAND FARM SOURCE **LIVESTOCK**
 Fonterra Dairy for life

COMPLETE DAIRY HERD AUCTION

A/C: JP & CM Goodin
 DATE: Monday 24 July 2017
 ADDRESS: Kaponga Selling Centre, Lwr Duthie Road
 START TIME: 11:00am
 COMPRISING OF:
 • 120 Jersey & Jersey X i/c dairy cows, BW 77, PW 90, R/A 87%

HERD DETAILS:
 • Herd offered for sale due to farm sale
 • Calv from 28/07, mated to LIC AB 4 weeks,
 • AB bred for 30+Yrs. TB C10, Lepto Vacc, bvd milk free
 • 380KG/MS/Cow, Blanket dry cow treatment
 • Many cows showing well forward in calving.

AUCTIONEERS NOTE:
 Rare opportunity to be able to buy replacements from genuine herd auction at this stage of the season.

PAYMENT TERMS: 20 October 2017.
 Catalogue available at auction or contact Brent Espin 027 551 366
 Sheldon Keech 027 222 7920
 Jason King 027 684 2443

For results call Farm Source Livestock

EARN FARM SOURCE REWARD DOLLARS ON ALL FARM SOURCE LIVESTOCK PURCHASES & SALES*
 *T&Cs apply. See nzfarmsource.co.nz/rewards

0800 548 339 | nzfarmsource.co.nz/livestock

SEND US YOUR SPORTS STORIES AND PHOTOS!

OPUNAKE & COASTAL NEWS

Opunake Music Workshop

7:30pm Tuesday, 25th July 2017
 CoastalCare, 26 Napier Street, Opunake.
 Bring instruments, basic amplification provided.

Functions, Events & Corporate.
 Sound - Lighting - Video.

We setup & operate our own Sound Equipment.
 We setup & operate our LED Lasers & Stage Lights.
 We record Video using Multi-Camera HD.

Colour Conversions Limited
 Video, Audio and Graphic productions
 Phone 027 897 8941
 Website www.colourconversions.com

WE LOVE TO RECEIVE YOUR PHOTOS

But please check their quality before sending them to us

Please do not reduce the size of the photos. They should be at least 1 MB in size and preferably 2 to 5 MB

OPUNAKE & COASTAL NEWS

Our next issue is August 4 but we need ads and editorial by the Monday July 31 at the very latest. Don't be late!

TRADES & SERVICES

COASTAL GIB STOPPERS. Phone Glenn 027 524 5745

McNEIL DECORATING – for all your painting and decorating. Ph: Jason McNeil 027 233 4584

QUALITY PAINTER AND PAPERHANGER – Ph: Bryan McNeil 027 465 8631

HEARTLAND CONSTRUCTION for building decks. Ph 027 236 7129.

HEARTLAND CONSTRUCTION for concrete work. Ph 027 236 7129.

CARPETS second hand, large selection After Disaster Ltd 223 Devon St West, NP. Phone (06) 769 9265

FARMBIKE SERVICES

Warea

For all your farmbike needs

PH: 06 752 8054

027 282 9338

Anytime

WANTED TO BUY

SCRAP METAL - for all scrap metal Taranaki wide, give us a call. Molten Metals (06) 751 5367.

www.moltenmetals.co.nz

WANTED. CALF MILK AND COLOSTRUM. Cindy and Murray are back raising calves. Immediate payment, prompt pickup. No amount too small. Phone 027 2402787 Opunake.

P.D. FLEMING LOGGING LTD

Forestry rigged & certified 33 ton loader, National Certificates in Forest Operations, Health & Safety approved. Free assessment on what your trees are worth \$\$\$

Ph: Paul

027 630 9922 or email: paulflems@gmail.com

FOR SALE

BURKHART Bale Feeders - New & Used

available here at Coastal Welders



Coastal Welders 027 255 8677 or 06 752 8138
email: coastalwelders@xtra.co.nz - Warea

PUBLIC NOTICES

NAU MAI HAERE MAI

Sunday July 23 2017

Te Haahi Ratana o Orimupiko Marae

11am Whakamoemiti (Service)

Shared Kai (Food)

Saturday August 26 2017

te Haahi Ratana o Orimupiko Marae.

Have an overnight stay

Shared Kai, Tea 5pm

7pm Whakamoemiti

8pm Te Timatanga o te Wananga (The Gathering)

Till Late

1. The Teaching of TW Ratana World Tour (Off the flag)
2. The Teaching of TW Ratana American Tour (time permitting)

3. Nga Himine (The Hymns)

Sunday August 27 2017

12pm Poututanga o te ra (lunch)

2pm Poroporoaki (farewell)

Nga mihi nui

Ruahau Rangī

Enquiries and Contact Ph. 021 028 55 068

FOR SALE

MOBILITY SCOOTERS

new from \$2495, POWERCHAIRS from \$2495. Trade in needed. Lottery Grant Scooters + forms. Free Delivery. Scooterman 06 769 9061

WHEELCHAIRS

from \$299. New models with attendant brakes, lightweight from 9kgs. Scooterman 06 769 9061

WALKERS

folding with brakes + seat from \$199. New colours. Scooterman 06 769 9061

BOWEN TECHNIQUE

at Hardys the Health Shop in Centre City. Phone 06 758 7553

CROOK AGAIN?

Systemswell is a comprehensive herbal and nutritional formula designed to strengthen your immune system, helps prevent infection. At Hardys the Health Shop in Centre City. Ph 06 758 7553.

DEEP SLEEP, 5HTP plus.

Supports relaxation of body and mind, supports healthy sleep patterns, and supports the nervous system. At Hardys the Health Shop.

TUMMY BUG, or have you

been on antibiotics? You need to get those good bugs back in your system with a probiotic. There are many types, dairy free, Children's or super strong. At Hardys the Health Shop.

WHITEBAIT NETS

FOR SALE. Bring your old whitebait net in to be renetted before the season starts. Collins Sports Centre. Ph 06 761 8778

PUBLIC NOTICES



OPUNAKE BUSINESS ASSOCIATION

Meeting 1st MONDAY OF EACH MONTH AT 5.30PM

Hughsons & Associates Boardroom at the Opunake Business Centre, 23 Napier St, Opunake (opposite the CoastalCare Medical Centre)



OPUNAKE AMATEUR ATHLETICS CLUB

AGM

Thursday 3rd August 2017, 7.30pm
Sandfords Event Centre

All Welcome



OPUNAKE COMMUNITY BATHS A.G.M.

August 3rd 2017

7pm at Sandfords Events Centre

Everyone Welcome. We need numbers to hold our AGM, please come along and support your community pool.

RE: COLIN AND JAMES WILLIAMS, FORMER OWNERS OF THE RAHOTU STORE FROM 1950-1970.

Kim Beaumont would love to get hold of any photos and stories from 1950 -1970 of her Grandparents. Please if you can help, bring them into the Opunake & Coastal News so that they can be passed on to her.

CHURCH NOTICES

Opunake & Okato Co-operating Parish CHURCH SERVICES

St Paul's Opunake Co-op & Rahu

Opunake Cooperating Parish St Pauls, Havelock St, 9.30am every Sunday and the

Rahotu - Wesley - 11am first Sunday of the month.

Oakura - St James - 10am, 2nd & 4th Sundays.

Okato - St Pauls - 10am, 1st & 3rd Sundays.

Opunake Catholic Church

SUNDAY 8.30 am at Pungarehu (St Martins),

10am at Opunake (Our Lady Star Of The Sea).

Other areas

Manaia - Sacred Heart - 1st & 3rd Saturdays at 5pm

(2nd, 4th and 5th Sat at Hawera's St Josephs).

Kaponga - St Patricks, Sunday 8.45am

ALL WELCOME

THE WAVE

Pentecostal Church 64 Domett Street, Opunake

Sunday Services 10.30am

Women's Group 10.30am Tuesday

Men's Group 7 pm Wednesday

Youth Group 7pm Friday

Come along or contact Pastor Murray

027 688 7378

ST. BARNABAS

Anglican Church 141 Tasman St, Opunake

Sunday Services 10.00am

Communion 2nd, 3rd & 4th Sunday

Prayer & Praise 1st Sunday

Every 5th Sunday all 4 churches gather

for a Combined Service

PUBLIC NOTICES



Environmental Awards

Taranaki has a great environment

Let's celebrate the efforts of the many individuals, community groups, iwi, businesses, farmers, educators, and organisations that are supporting and improving our environment.

Nominations close Wednesday 23 August 2017

Information and nomination forms are available at www.trc.govt.nz/environmental-awards

Or contact:

Rusty Ritchie, Communications Manager

Taranaki Regional Council

☎ 0800 736 222

✉ Rusty.Ritchie@trc.govt.nz

The five categories are:

- Environmental action in education
Sponsored by Fairfax Media
- Environmental action in the community
Sponsored by Methanex
- Environmental leadership in dairy farming
Sponsored by Fonterra
- Environmental leadership in land management
Sponsored by Dow AgroSciences
- Te taiao me te pākihi Environmental leadership in business
Sponsored by Ngāruahine, Ngāti Ruanui, Te Ātiawa, Taranaki and Ngāti Mutunga



PUBLIC NOTICES



Volunteer Rights & Responsibilities

This **FREE** interactive session brought to you by The Wheelhouse is delivered by Angela Solomons of Taranaki Community Law and will cover issues such as:

Volunteer and client privacy,
Health and safety at work,
ACC,
Discrimination

Make sure you and your volunteers are clear about what their rights and responsibilities actually are.

Tuesday 25 July 2017, 10:30 – 12:30,
CoastalCare Centre, 22 Napier Street, Opunake
Or

Tuesday 1 August 2017, 10:30 – 12:30
Taumata Park Recreation Centre,
Preston Street, Eltham

To book contact Marcia on
06 759 1178 ext 4 or 027 789 4351
Email: manager@wheelhouse.org.nz



Opunake Lions Club

Casualty Calf Collection

starts Tuesday July 11.

Pickups every second day
through
until early October.

Red Wallacecorp flags will be
available from July 11 from
Farm Source
or Farmlands.

THE NEWSPAPER
TARANAKI
LIKES BEST



The Opunake & Coastal News is now available in newstands throughout Taranaki at the following locations:

Challenge Spotswood Petrol Station
The Health shop, Centre City
Westside Grille, Tukapa Street, Westown
Outside First National, Cnr Victoria and High Streets, Hawera

Look for the Newspaper Reading Cow on the newstands

Okato and Districts Historical Society Inc.

The Annual Meeting will be held at the Community Trust Hall Okato on Tuesday 15 August 2017 at 10 am.

New Members welcome.
Anne Bolton
06 752 4499

Westside Martial Arts AGM

To be held at Karate Dojo
72 Domett Street
July 29, 2017 at 1pm
All Welcome

BUDGET ADVICE every second Wednesday at Coastal Care. 9.30 - 12.30. Phone 0800 333 048

THE CHOIR from St Marys, New Plymouth will bring a choral evening at St. Barnabas, Opunake at 4pm on July 30. A warm welcome is extended to all

SITUATIONS VACANT

Calf Rearer

Washer & Co,
Manihi Rd
3 months starting mid July
Good facilities
Must be able to work as part of a team
Phone Ryan 0800 479 264
or Email office at bullshop@xtra.co.nz

0.5 KAIRIWHI/ KAIARAHU. Kei te rapu matou i tetahi tangata hei awhina mai etahi o a matou akonga no o te Tau 0 - 8. Mehemea kei a koe nga pukenga e rarangi iho nei, tonoa mai mo te turanga e watea ana; matatau ki te reo Maori; ngakaunui ki te mahitahi me te tamaiti; rata ki nga mahi roto i te kura; mahitahi pai me te kaiako ki te hiahia koe. Applications close 3pm, July 24. Incumbent applying. Please contact us; Ph. 06 761 7430 for a copy of the position description, and email your CV and covering letter to tamarongo@gmail.com Nga mihi Gaye Whitu Acting Up Principal

What's On Listings



JONATHAN YOUNG

Need to chat with your Local MP Jonathan Young?
For more information phone: 06 7591363
Or email newplymouthmp@parliament.govt.nz

OPUNAKE BUSINESS ASSOCIATION

Meet on the 1st Monday of each month.

OPUNAKE COUNTRY MUSIC CLUB

First Sunday of each month at the Opunake Town Hall, 1-4pm. All welcome

SCHNITZEL NIGHT

Every Wednesday at the Stony River Hotel, Okato

COASTALCARE – LISA KEEN AUDIOLOGY

Wednesdays 9am - 5pm, for an appointment call 027 591 4222 - 0800 555 676

TAI CHI BASICS

Thursdays 9am – 10am at Coastal Care Community Room

NIGEL CLIFFE ACUPUNCTURE

Thursdays 11am-4pm at Coastalcare, Opunake.

CLUB HOTEL TEXAS HOLDEM POKER

Wednesday and Thursday Nights at the Club Hotel.

CLUB HOTEL POOL

Tuesday Nights. New players welcome.

OPUNAKE SURF INN

Every day free pool. Every Friday free sausage sizzle from 5. Every Sunday afternoon. Pool comp

COASTAL YOUNG FARMERS

Meet 2nd Thursday of every month at 7pm at the Okato Bowling Club.

TARANAKI COUNTRY MUSIC HALL OF FAME, MANAIA

Running every Thursday night from 7.30pm, 11 Surf Highway, South Road, Manaia.

EGMONT EUCHRE CLUB

Meets every Thursday 1pm at the Opunake Bowling Club

CAPE EGMONT HISTORIC LIGHT & MUSEUM

Open 11am – 3pm weekends, Bayly Road, Warea.

TODD ENERGY AQUATIC CENTRE

Family fun times 10.30am to 4.30pm.

ELTHAM BUSINESS ASSOCIATION FRIDAY MARKETS

8am to 1pm, Carpark of Touch Point, High Street, Eltham.

PREGNANCY HELP TARANAKI

Is now in OPUNAKE! Are you pregnant? Do you have a baby or young family? To hear more, like us on facebook www.facebook.com/preghelptaranaki/. Please come and meet us and find out how we may be able to help you.

OPUNAKE FRIENDSHIP CLUB

Meeting last Monday of each month in Opunake Town Hall at 1.30pm. All welcome.

TAINUI DAY CENTRE Gentle exercise, friendship, fun and support for older people at St Barnabas Parish Hall, Mondays 10:00 am – 12:30 pm

Contacts Jenny 761 8080 Glenys 655 8025

PERCY THOMSON ART GALLERY EXHIBITION

June 30 to July 23. Moments of Inertia. See advert for details.

THE VILLAGE GALLERY ARTFUL FRENZY

Fabulous Fibres - an exhibition of Fibre Art and Wearables July 3 to 28. See advert for details

HEADLANDS RESTAURANT AND CAFE

Live Evening Entertainment, Friday nights, beginning June 26.

OPUNAKE LIONS CASUALTY CALF COLLECTION

Starts July 11. See advert for details.

TRADITIONAL MUSIC DUO - POLYTROPOS

Celtic music at 4th Wall Theatre, New Plymouth. Saturday July 22. See advert for details.

POWERWORX OPUNAKE CUP DAY AT NEW PLYMOUTH

Pukekura Raceway, July 22. See advert for details.

STONE OAKS WILDLIFE PARK

Open through the school holidays. See advert for details.

WAIMATE HOTEL, MANAIA

Pool Tuesday nights from 6pm. See advert

BUTLERS REEF, OAKURA. THE MURRAY BROTHERS LIVE

Saturday July 22. See advert.

COASTAL WAVES BASKETBALL SKILLS COACHING

In Opunake and Stratford. Starts July 25. See advert for details

WESTSIDE MARTIAL ARTS AGM

July 29. See advert for details

CHORAL EVENING WITH ST MARY'S CHOIR

St. Barnabas Church, July 30. See Advert.

OPUNAKE COMMUNITY BATHS AGM

August 3 at Sandfords Event Centre. refer advert.

OPUNAKE AMATEUR ATHLETICS CLUB AGM

August 3 at Sandfords Event Centre. Refer advert

Taranaki DHB launches winter ED campaign

With winter illnesses and sports injuries adding to the workload at Taranaki DHB's Emergency Department (ED), an awareness campaign called 'Should you be at ED?' has been launched to help educate the Taranaki community about what is considered an urgent and non-urgent health issue.

Sharon Crowe, Taranaki DHB's Clinical Nurse Manager for ED says "The campaign is a reminder that the hospital ED is for serious and life-threatening illness or injury. We want people to stop and think – should I be at ED this winter? There are other options for non-urgent health concerns."

The campaign features people with common health issues that regularly turn up at ED.

Mrs Crowe says, "We have used a mother with her young child who has earache, a rugby player with an ankle injury, a young professional female who has

a head cold and an elderly gentleman who has chest pain."

"The man with the chest pain is the person who should be at ED. But the other ailments can be treated by other health services. ED is for issues like chest pain, serious accidents and trauma. It is very important that people experiencing a genuine emergency call 111 for an ambulance or go directly to ED."

"For symptoms like ear ache, coughs and colds you can call Healthline (0800 611 116), visit a pharmacy or see your GP. For injuries like sprained ankles and suspected broken bones you can visit MediCross or Phoenix who offer x-ray services, treat broken bones and other sports injuries," said Mrs Crowe.

Taranaki DHB has used a number of different strategies to promote the campaign, including radio ads, a moving billboard on the back of a bus and cinema advertising.

Mrs Crowe adds, "We hope our campaign better directs the Taranaki community to the correct service to help them with their health issues, whether they are urgent or non-urgent. Our main message is to save ED for emergencies."

"People can avoid ED this winter by staying well. Get vaccinated for influenza, renew prescriptions on time, stay warm, eat healthy, keep active, avoid germs by washing your hands regularly and play safe to prevent sports injuries."



The Mountain with fresh snow. Times to get out our skis and snowboards soon for some winter fun.

Choral Evensong at St Barnabas

On Sunday July 30 at 4pm the choir from Taranaki Cathedral of St. Mary, New Plymouth will bring a Choral Evensong to Opunake to which all are invited.

The service will be lead by the Dean of the Cathedral, The Very Reverend Peter Beck and the Choirmaster,

Christopher Luke.

Evensong is a beautiful part of the rhythm of worship, a lovely time to slow down and reflect on life and the activities of the day.

Part of the Cathedral's role is to maintain and build upon the relationships between the seat of the Bishop (The

Cathedral) and the local community church's that are spread through the Diocese. A Visit by the Cathedral Choir is one way of doing this.

At another level, a visit by a choir is a wonderful reminder of the joy of singing together.

During the service an offer-

ing will be taken up and this will be given to the Cathedral for its ongoing ministry to the people of Taranaki.

We look forward to you joining with us at St Barnabas on Sunday, July 30 at 4pm for Evensong with the Cathedral Choir.

Rev Ian Sargeant



Coastal Care Health and Community Centre

CoastalCare
26 Napier St
Opunake
Phone 06 761 8488
Email info@coastalcare.co.nz



Hello and Welcome to Coastal Taranaki.

We are CoastalCare, a two year old building with the aim of being the "one stop shop" for health and social services on the coast, governed by a Board of Trustees and managed by a Facility Manager.

We currently house the services listed on the right and are always looking for further services for the Coastal people.

We have created this list to try and make your transition here a little easier. This list is current as of 22 May 2017. To check current services and keep up to date one of the following is suggested.

Join us on facebook, search CoastalCare

Check our website www.coastalcare.co.nz

Join our monthly newsletter either via facebook, the website or phone Aretha on the above number.

We hope you enjoy your time on the coast and look forward to seeing you at the centre.

Many Thanks
Aretha Lemon
Facility Manager

CoastalCare Service Information List Phone 06 761 8488

Name	When	Contact Number
Services at the CoastalCare Building		
Coastal Printers	9am – 5pm Wed and Fri – Pickups and orders at reception on other days	06 761 8037
Opunake Medical Centre	8.30am – 5pm Mon - Fri	06 761 7324
Opunake Pharmacy	8.30am – 5pm Mon- Fri 9am – 12pm Sat	06 761 8144 0800 367 232
Plunket Nurses Community Karitane	Home visits and base clinics every Wednesday and Thursday	Marlene – 027 218 8214 Gaye – 027 275 7749
St John Ambulance	Ambulance service First Aid training courses Medical Alarm Service	Call 111 for an emergency Local base 06 761 8560 Alarms 0800 50 23 23
Acupuncture – Nigel Cliffe	Every Thursday 12 noon – 4pm	027 681 9524
Alcohol & drug counselling	Tui Ora (by appointment) District Health Board (by appointment)	027 838 5167 06 753 7838
Budget Advice	Every 2 nd Wednesday	0800 333 048
Community Corrections	Every Tuesday by appointment	06 278 0650
Counselling	Sias Hoffman - specialising in anxiety, depression and relationship therapy. Tui Ora (by appointment) District Health Board (by appointment) Te Ara Pae Trust - Gwenyth Richards – specialising in Family Violence and Sexual Violence	027 388 5668 06 759 4064 06 753 7838 06 278 6399
Dairy NZ	Dairy Farming courses NZQA unit standards (14 weeks over the year)	0800 467 768
Foodbank	8.30am -4pm each day on demand	06 761 8488
Lisa Keen Audiology	Every 2 nd Wednesday	027 591 4222 - 0800 555 676
Midwife – Surf Side Midwifery	Jo Lockton – home visits and clinic appointments as needed	0800 7373 6489 027 622 1099
Needle Exchange Program	Every Friday 9am – 3pm	761 8488
Paediatrician	As needed by appointment	referral from doctor needed
Plunket mums coffee group	Every 2 nd Thursday 10am – 12.30pm	Karen - 027 275 8563
Pregnancy Help	Every 2 nd Thursday 10am – 12pm	06 765 5042
Public Health Nurse	In schools Mon - Thur	06 761 8090
Supporting Families in Mental Illness and Addiction – Free service	Home visits as requested for Children 10 -18 whose parent and/or loved ones/carer of a person with mental illness or addiction	06 757 9300
Tai Chi classes	Every Thursday 9-10am	06 761 8488
Taranaki Podiatry	Every 3 rd Tuesday	06 761 8488
Taylor Dental Practice	Every Thursday 8.30am – 4pm	06 759 1047
Tui Ora - Massage	Mihi Henry - Every 1st Thursday 10am – 3pm	06 759 4064 021 531 4506
Quit Smoking support	As needed by appointment Tui Ora TDHB	06 759 4064 06 753 7838
Services for people with Diabetes and various heart conditions		
Diabetes Educator, Dietician, Clinical Pharmacist and Social Worker - referral from doctor		
Other Health Services in Opunake		
Active Physiotherapy	Tania L'Ami – 26 Napier St	06 769 9992
Coastal Community Transport	For health transport needs when no other transport is available	0800 733 276
Coastal Physiotherapy	Nicole Murphy - 742 Oeo Rd	06 274 5873
Depression Rural helpline		0800 111 757
Rural Support Trust		0800 787 254

Award winning duo will perform at Opunake Friendship Club

Musical talent often runs in families, and in this case it does. Regular attendees of the Opunake Music Workshops, singing duo Maree Wheeler and daughter Shamika Hoeta have been winning a collection of Country Music Awards, an accomplishment that would make any family proud. In these competitions they were judged on presentation, including appropriate introductions for songs, their memory of lyrics, vocal and visual expressions, musical abilities, song choices, and their overall entertainment value. On June 3-4, at The Rangitikei Country Music Awards, Maree entered a variety of categories as a solo artist. To her credit, she won two first placing's in the female and gospel sections, second in the traditional section, and scored first overall for the Sunday competition. Following in her mum's footsteps, Shamika (12 years), won first place in the junior gospel, junior female, junior rock section, and second in the junior traditional section at the Muddy River Country Music Awards, held in Whanganui on Saturday July 8. These Awards are run annually specifically for Littlies (under 7 yrs) Juniors (under 13 yrs) and Intermediate (under 18 yrs). At our last music group meeting on July 4, proud mum held her ipad next to the microphone, so we could all hear her daughter winning performance. The pair are currently recording their first CD with Colour Conversions



Shamika Hoeta and Maree Wheeler

in Opunake. It will be released later in the year. Maree and Shamika, along with other talented Opunake Music Workshop singers and musicians, will be providing the entertainment between 1:45pm and 2:45pm for the Opunake Friendship Club to be held at the Opunake Town Hall on July 31. Come along and join us. For further

information please ph: 06 761 8873.

All musicians, singers, dancers and more are welcome at the next Opunake Music Workshop meeting at 7:30pm, Tuesday July 25 at CoastalCare - Community Lounge, 26 Napier Street, Opunake (opposite Opunake & Coastal News). Please bring along your \$2 coin,

which will be donated to the CoastalCare Trust.

Anne Montgomery

WE LOVE TO RECEIVE YOUR PHOTOS

But please check their quality before sending them to us

Please do not reduce the size of the photos. They should be at least 1 MB in size and preferably 2 to 5 MB

OPUNAKE & COASTAL NEWS

What's On **butlers reef**

The Fabulous

MURRAY BROTHERS

They were really well received last time!

Saturday July 22
6pm

NO COVER CHARGE

1133 Main South Rd, Oakura
Phone 06 752 7765 - www.butlersreef.co.nz

Bad weather affects Market Day

High winds and stormy weather brought down trees and branches at Pihama Lavender last Wednesday and Thursday, causing the cancellation of the popular Growers and Makers Market.

The owner of Pihama Lavender was sad to have to take such a measure and managed to clean up a lot of the debris before Sunday. The larger trees and branches however created an OSH risk, especially with the large traffic volumes normally experienced on market

days. She understands that the food businesses that were open in Opunake did a good trade. The next market day is set for Sunday August 20, and tree work will be completed ahead of that day to ensure the safety of all visitors.

EVERYBODY'S THEATRE

Opunake - MOVIES - BOUTIQUE THEATRE - HIRE
For information email: everybodystheatre@gmail.com or check facebook- Everybody's Theatre
Check out our website at www.everybodystheatre.co.nz - Phone 027 3837926
JULY/AUGUST 2017

Lollies, Popcorn, Ice-creams, Chocolate bars, Coffee & Tea For Sale	Adults \$10, Students 4-16yrs \$8, Under 4 free Senior Citizens \$8. No Eft-Pos
DESPICABLE ME 3 Action, Adventure, Animated, Comedy, Kids & Family, Science Fiction 1hr 36min PG Gru faces off against Balthazar Bratt, a former child star who grows up to become obsessed with the character he played in the '80s, and gets into some sibling rivalry when he meets his long lost twin brother, Monday 17 July 1pm Saturday 5 August 1pm	TRANSFORMERS: THE LAST KNIGHT Action, Adventure, Science Fiction, Blockbuster PG-13 Humans and Transformers are at war, Optimus Prime is gone. Saving our world falls upon the shoulders of an unlikely alliance: Cade Yeager; Bumblebee; an English Lord; and an Oxford Professor. Wednesday 19 July 1pm Saturday 22 July 7pm Friday 28 July 7pm
PIRATES OF THE CARIBBEAN Action, Adventure, Comedy, Blockbuster 2hrs 9mins M Supernatural themes & violence Johnny Depp returns as bumbling pirate Captain Jack Sparrow in Disney's latest swashbuckling adventure. Wednesday 19 7pm	VICEROY'S HOUSE Drama, Historical 1hr 46mins M Content may disturb Hugh Bonneville and Gillian Anderson star in this historical drama set during the Partition of India. In 1947, Lord Mountbatten (Bonneville) assumes the post of last Viceroy. Wednesday 26 July 1pm
WONDER WOMAN Action, Adventure, Blockbuster 2hrs 21mins M: Violence Before she was Wonder Woman, she was Diana, princess of the Amazons, trained to be an unconquerable warrior. Fighting alongside man in a war to end all wars, Diana will discover her full powers... and her true destiny. Friday 21 July 7pm Sunday 23 July 7pm Saturday 29 July 7pm	SPIDER-MAN: HOMECOMING Action, Adventure, Science Fiction 2 hr 13 mins PG Coarse language Peter tries to fall back into his normal daily routine - distracted by thoughts of proving himself to be more than just your friendly neighbourhood Spider-Man - but when the Vulture (Michael Keaton) emerges as a new villain, everything that Peter holds most important will be threatened. Friday 4 August 7pm Saturday 5 August 7pm
CARS 3 Adventure, Comedy, Family, Animation 1hr 49mins G Blindsided by a new generation of blazing-fast racers, the legendary Lightning McQueen is suddenly pushed out of the sport he loves. Proving that #95 isn't through yet will test the heart of a champion on Piston Cup Racing's biggest stage! Saturday 12 August 1 pm	UP FOR LOVE Comedy, Romance, French with English subtitles 1hr 38mins M Offensive language and sexual references Laugh out loud comedy that is all about the long and short of falling in love. Is Diane out of his reach or can they meet in the middle? They're both looking for love but society is watching and judging. Sunday 30 July 7pm Wednesday 2 August 1pm

WEDNESDAY	FRIDAY	SATURDAY	SUNDAY
19 Transformers: The Last Knight 1pm Pirates of the Caribbean: Dead men tell no tales 7pm	21 Wonder Woman 7pm	22 Despicable Me 3 1pm Transformers: The Last Knight 7pm	23 Wonder Woman 7pm
26 Viceroy's House 1pm Up for Love 7pm	28 Transformers: The Last Knight 7pm	29 Cars 3 1pm Wonder Woman 7pm	30 Up for Love 7pm
2 Up for Love 1pm Wonder Woman 7pm	4 Spiderman 7pm	5 Despicable Me 3 1pm Spiderman 7pm	6 McLaren 7pm

TET Cue Theatre



Audition Notice

PLAZA SUITE

Comedy by Neil Simon

Director: Heather Harrison

Sunday 23rd July @ 2.00 pm

Cue Theatre, 38 Matai Street, Inglewood

Cast: 3 male, 4 female plus 4 male and 1 female extras

PLAYING DATES: 1 - 11 November 2017

A portrait of three couples occupying a suite at the Plaza Hotel, New York. An anniversary is celebrated today or was that yesterday? A Hollywood producer is looking for fresh fields after failed marriages, and a father and mother who just want their daughter married.

Scripts and further information contact:

Joan Ertel, Inglewood, joaneertel@gmail.com or 7567120

Heather Harrison, New Plymouth, haharrison03@gmail.com or

7587939

Coastal Waves Basketball promoting fundamentals



Angelo Hill

and taking their skills from practice to the game." He adds, "And that is how you hook them."

He said that registration has just opened for Term 3. In Opunake the practices will be on Tuesdays from 4pm to 6pm at the Sandford Event Centre. In Stratford the practices will be on Wednesdays from 4pm to 6pm at the War Memorial Hall. (Angelo is not sure, at this stage, that numbers will justify continuing with the Hawera one). Angelo will encourage the youngsters to keep a practice journal so they can chart their progress over time.

The four basic fundamentals Angelo will stress are shooting, passing, dribbling and defence. "If you can make the most of the fundamentals you can take it to the next level," explains Angelo.

The "next level" could include being selected for TCB (Taranaki Country Basketball) teams or even being chosen for a sporting scholarship in the United States. At present Joellen Hughson-How (Staten Island University) and Kayla Manirirangi (Tulane University, New Orleans) have been accorded this honour. Eva Langton

Basketball identity Angelo Hill recently established a venture called Coastal Waves Basketball Ltd with the idea of promoting the fundamentals in youngsters keen to make basketball waves. The highly esteemed physical education teacher at Opunake High School is keen to, "Foster and develop the fundamentals of basketball in basketballers Years 5 to 8, with ages ranging from 8 to 13."

The programme was started in Term 2 of the school year with classes in Opunake, Stratford and Hawera. About 50 trainees took part. Angelo was heartened by the positive feedback from the youngsters and their parents. "The feedback from parents has been very very positive - seeing their kids enjoying the sport



Angelo Hill at right teaching his young basketballers the fundamentals.

has recently been similarly chosen and leaves soon for the States. Angelo points out, "Sport and education go hand in hand." He adds, "You need to be intelligent to play at a high level."

Angelo says he has been involved with the coaching of Joellen and Eva, but pays tribute to many other Taranaki coaches who have helped young basketballers to their optimal best. "So many coaches have impacted but without their help they won't reach their potential." He mentions a number of excellent coaches including Trent Adam, Willie Banks, and Aaron Langton to name a few.

Angelo had a long and distinguished career himself, which provides the back-

ground for his coaching. Since arriving in New Zealand from the United States in 1983 he played for the Wellington Saints (1983-1985), Canterbury (1986-1987) and New Plymouth (1987-1988). Many of these games were televised and players like

Angelo had to adapt to the enthusiasm of the spectators. Angelo gets a huge buzz personally from this new endeavour. "The kids are absolutely fabulous," he enthuses. "What they want is to learn. When you see their eyes light up you can see

their engagement." Also important is the social aspect. "The friendships they make is huge as well."

Angelo concludes, "The whole thing is very rewarding. I wish I did this a long time ago."

Coastal Waves
BASKETBALL SKILLS OPPORTUNITY TERM 3
 For children in years 5-8 \$100
 HOSTED IN:
 Opunake @ The Event Centre
 4pm - 6pm starting Tuesday July 25
 and in
 Stratford @ The War Memorial Stadium
 4pm - 6pm starting Wednesday July 26
 Register now to secure your child's spot
 hillscoastalwaves@gmail.com | 027 616 7521
 COACHING BY:
ANGELO HILL



Family Fun at the Movies

Sunday 13 August 2017
Everybody's Theatre, Opunake



12noon
Tickets \$5 per person
General Admission and 2D only. PG movie.

Tickets on sale now at **Opunake LibraryPlus** or **TSB Hub, Hawera.**
 Phone 0800 111 323
 www.southtaranaki.com

THE FITZ
RESTAURANT AND BAR
WHATS ON

TUESDAY QUIZ NIGHT at 7pm Entry is free	MONTHLY LIVE BANDS Play GAMING LOUNGE
WEDNESDAY Pool Night	LIVE SPORT ON THE BIG SCREEN
THURSDAY WINE NIGHT	FRIDAY 4TH AUGUST Shaskeen Reel playing live from 8pm
FRIDAY HAPPY HOUR 4.30 till 6.30pm	

FULL RESTAURANT AND BAR MENU
 • New menu available now • Gold Card Meal Deals

601 Devon St East, New Plymouth 06 759 2084 Open 7 Days